



2024 - 2025
ANNUAL
REPORT



WICWC.ORG

WEST ISLAND CANCER WELLNESS CENTRE
CENTRE DE BIEN-ÊTRE DE L'OUEST-DE-L'ÎLE
POUR PERSONNES ATTEINTES DE CANCER

 www.wicwc.org

115 Du Barry, Kirkland (QC) H9H 0C4
Phone: (514) 695-9355 Fax: (514) 695-9315



Table of Contents

Mission	3
A Word from the Executive Director	4
Wellness Team	5
Volunteers	8
University Partnerships	11
Programming	12
Financials	18
Fundraising	20
Donor Recognition	26
Service Partners	41

About the WICWC

The West Island Cancer Wellness Centre (WICWC) is a registered charity dedicated to offering compassionate care and support to anyone experiencing cancer, either having it themselves or supporting someone with cancer. Our mission is to address the multifaceted needs of those living with cancer, encompassing the emotional, physical, spiritual, social, informational, practical, and systemic needs, collectively known as the 7 pillars of wellness.

Our programs and services are offered free of charge to our participants as a result of our fundraising efforts, and they aim to complement traditional medical approaches. Through our wellness programs, participants receive personalized support, acquire coping strategies, discover additional alternatives, and gain a deeper understanding of their specific condition. Our goal is to empower them to regain control of their lives, reduce isolation, and nurture hope, regardless of their disease's stage.



A Word from our Executive Director

Debbie Magwood, M.Ed., OPQ

Dear Friends, Supporters, and Members of the West Island Cancer Wellness Centre Community,

Reflecting on this past year, we were met with many challenges, but faced them with grace, dignity and perseverance. The West Island Cancer Wellness Centre stands as a beacon of hope, resilience, and unwavering support for those navigating the challenges of living with cancer.

This year has been a testament to the power of ingenuity as we had to pivot and find more effective and productive ways to fulfil our purpose. We have expanded our programs, automated and streamlined processes, all in the ultimate goal of maintaining a gold standard of care.

Every success we celebrate directly results from the dedication and generosity of our staff, volunteers, donors, and supporters. Your contributions have allowed us to provide whole-person Cancer Wellness care that addresses our members' physical, emotional, spiritual, systemic, informational, social, and practical needs. You have allowed us to offer a sanctuary where healing and hope flourish.

To our donors and volunteers, thank you! Your contribution fuels and inspires us. Without you, we could NOT do what we do.

To our participants and their families, you are the heart of our mission. Your strength, courage, and perseverance inspire us daily. Your stories of hope drive us to improve and innovate our services continually. We are committed to you and vow to continue fostering a community where every individual affected by cancer feels supported, valued, and empowered.

Thank you for being an integral part of our mission. Together, we are creating a brighter, more hopeful future for all those living with cancer.

With deepest appreciation and warmest regards,

A handwritten signature in black ink that reads "Debbie". The signature is fluid and cursive, written in a professional yet personal style.

Wellness Team

Staff

Debbie Magwood, M.Ed., OPQ
WICWC Founder & Executive Director

Melanie Richter, MBA, CFRE
Director of Fund Development

Alyssa Bracken
Marketing & Communications
Coordinator

Amanda van Rootselaar
Receptionist/Program Assistant

Sandy Fitzpatrick, RN
Participant Care Coordinator

Julie Szalai
Participant Relations Coordinator

Tanya Forward
Development Assistant

Stacey Waks, MA, CCC
Support and Outreach Coordinator

Nadia Gerges
Programming Coordinator

Alisson Weiss
Events Coordinator

Michelina Perrotta, CPA
Finance Coordinator



Board of Directors

Debbie Magwood, M.Ed., OPQ President

WICWC Founder & Executive Director

Jay Deakin, Chair

Deakin Realty, Certified Real Estate Broker, Agency Executive Officer & Managing Partner

Dimitrios Christopoulos, Director

Scotiabank

District Vice President, Montreal West

Alanna Roszkowski, Director

DLC, Chief Operating Officer

Fauzia Sikender, Director

Manager Placements, Awards, Events/Senior Manager Corporate Talent
Air Canada

Laurie Traylen, Director

The Study, Director of Athletics (Retired)

Tony Zinno, Director

Zinno Zappitelli Architects, Architect

Financial Advisory Committee

Michael Boychuk

Bimcor, President & CEO (Retired)

Russell J. Hiscock

CN Investment Division, President & CEO
(Retired)

Medical & Wellness Advisory Committee

Debbie Magwood, M.Ed., OPQ

Founder & Executive Director, WICWC

Cindy Finn, Ph.D. OPQ

Director, Student Services, LBPSB

Shereen Ghali, MD

Hematologist/Oncologist Lakeshore
General Hospital

Lucy Gilbert, MD

Professor, Oncology; Obstetrics &
Gynecology, McGill University Health
Centre

Debbie Loyer, MDCM, FRCP

Pediatrician, Montreal Children's
Hospital

Nada Nasreddine, CDE

Owner, Pharmaprix Beaconsfield &
Kirkland

Marco Vernacchia

Pharmacist-Owner, Pharmaprix,
Pointe Claire

Volunteers

Our amazing volunteers continue to be the heart of everything we do. We sincerely thank those who generously share their time and talents to support individuals living with cancer. Your commitment truly makes a difference. Thank you for being an integral part of our community and helping us make a lasting impact.



Reception Support

Celine Audet

Jennifer Byrns

Marie-Andrée Crepeau

Kim Denver

Barbara Luthi

Linda vanBoncoeur

Eileen Holden

Devki Vaida

Anika Kumar

Vydeki Sandralingam

Olga Novikov

Johanne Pelletier

Wellness Administrators

Megan Hayes

Carolyn Cunnison

Jennifer Byrns

Susan Phillips

Jocelyn Sklivas

Wellness Guides

Tanya Brasseur

Sylvia Papazian

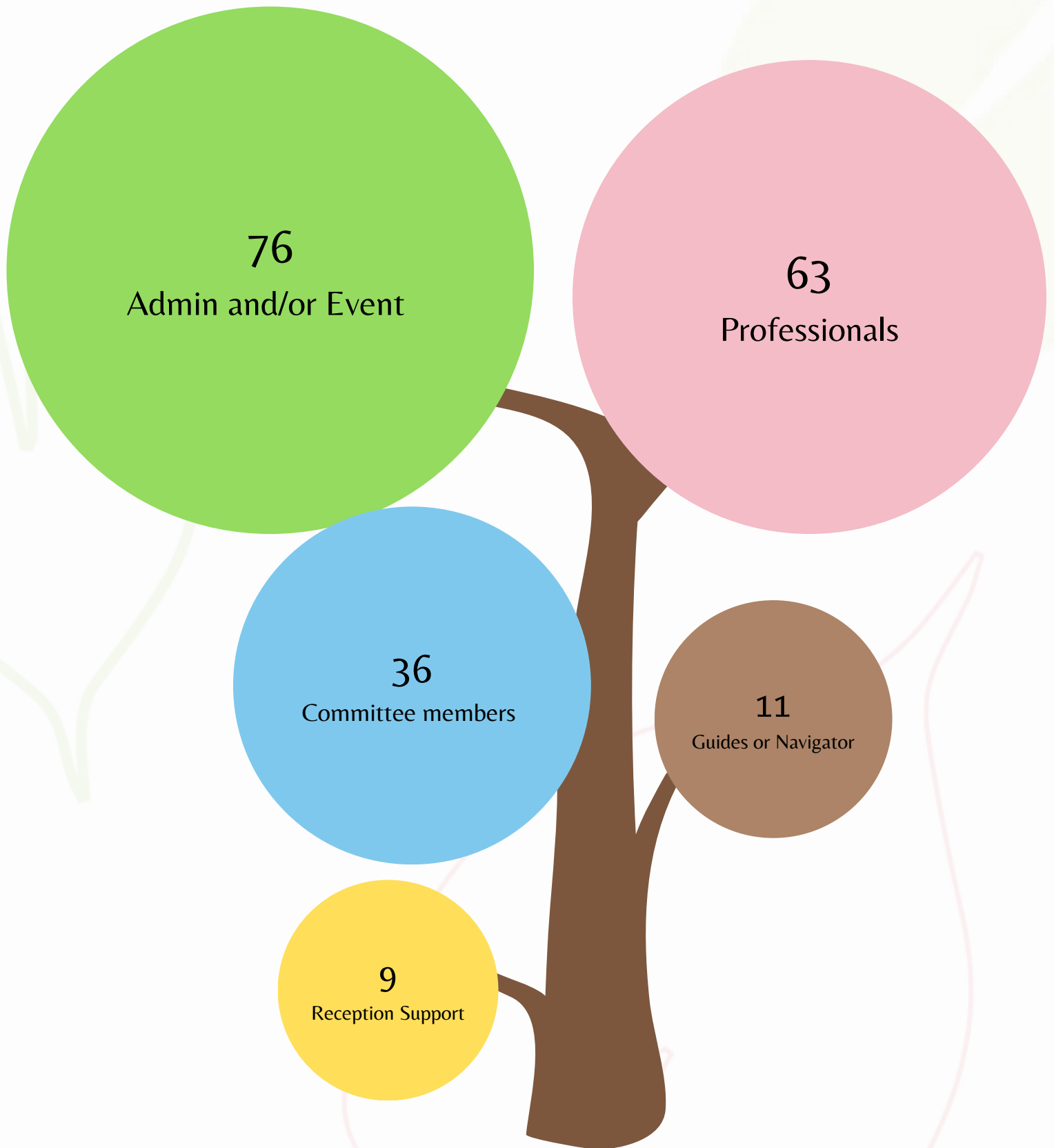
Kayla Durante

Helen Seremetis

Kathy Kovacs

Liane Laberge

Volunteers



Wellness Professionals

We express profound appreciation to our volunteer professionals who dedicate their time and expertise to help our participants live well with cancer.

Talya Abran-Bromley
Christian Aubert
Monique Arseneault
Stefania Arrizza
Sylvie Bisson
Leonora Bassrei
Jena Bertagnolli
Susan Byrne
Susane Cintra Borja
Michelle Champagne
Sarah Charles
Patria Cesta-
Papathanasopoulos
Andrea Courey
Karyn D'Amour
Francine Duhamel
Nevine Elchibini
Jasmine Ellemo
Debbie Esplin
Maria Esposito
Debra Ganong
Robin Glance
Giuliana Giannini

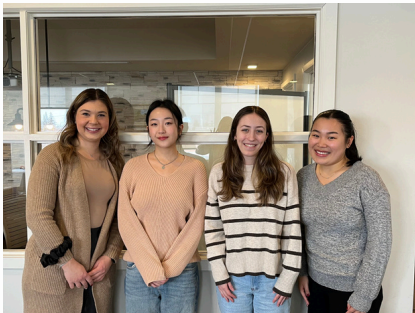
D Cheryl Harrel
Shelley Hall
Michel Harpin
Maryse Hudon
Karen Jesseau
Matteo Iacobelli
Laura Kestenberg
Dave Lewis
Paola Lebrun
Brigitte Levesque
Jo-Lynn Matar
Daphne McGuire
Cathy McGuire
Danielle Monton
Olga Munari
Susan Murphy
Kenzie Nickerson
Jaden Obisanya
Erin O'Loughlin
Gina Patricco
Lesley Pasquin
Joanne Pasquin
Ingrid Power

Raha Ramanarivo
Olivia Rippa
ulia Rodrigues
Natalia Rodriguez
Audrey Laugier Saint-
Antonin
Elicia Sevy-Hassan
Stephen Schettini
saura Schembi
Fariba Salehi
May Stern
Vanessa Smrk
Samya Tatone
Jeannie Trubiano
Marianne Truong
Sandra Viscuso
Lila Weitz
Maged Youssef
Paola Lebrun

University Partnerships

We are very proud to partner with multiple universities, providing internships to their students at the Centre. These internships not only enable students to acquire valuable work experience but also allow us to leverage their time and talent. This year, we are fortunate to maintain existing partnerships.

McGill University (BNI) Nursing Students



Nursing students completed their final STAGE placement with a focus on the post-treatment challenges faced by individuals living with cancer. Their project explored the mental health needs of cancer survivors and provided recommendations to improve access to mental health support based on their research and community engagement.

Concordia University Arts Program



The students were in charge of planning an 8-week drawing technique class where they showcased their teaching and arts skills. Throughout their 8-week term they were assessed by a Teacher Assistant from the Arts Department.

Past Partnerships

- Concordia University: Drama Therapy, Music Therapy
- Dalhousie University: Social Work
- John Abbott College: Nursing, Social Work, Graphic Design
- McGill University: Kinesiology, Social Work, Medicine (residents)
- Queens University: Rehabilitation Therapy
- University of Montreal: Social Work, Nursing
- Yorkville University: Social Work

Programming

Supporter Initiative



This year, we placed a strong focus on recognizing and supporting those who stand beside individuals living with cancer through our new Supporter Initiative. As part of this effort, we transitioned from using the term caregiver to supporter, a change that better reflects the diverse ways people provide care and encouragement to their loved ones.

To honour their invaluable role and promote their well-being, we introduced a monthly workshop highlighting:

- Identifying the Supporter
- Self-Care Strategies
- Community and Support
- Explore Our Services

We also launched a Peer-to-Peer Support Group for Supporters, providing a welcoming space to share experiences, exchange information, and receive confidential support, reinforcing that supporters are essential to the well-being of others and equally deserving of care themselves.

Zoom into Wellness

Each year, we host our Zoom into Wellness sessions, free educational workshops open to the public, designed to inform, inspire, and promote wellness by sharing expert knowledge.

This year's sessions included:

- Dr. Joe Schwarcz: Humor, Magic, and Health
- Dr. Celena Scheede-Bergdahl: Demystifying the Exercise Prescription
- Nurses from Lakeshore and St. Mary's Hospital: Navigating the Complexities of Healthcare
- Pasquale Petrella and Chantale Massicotte: Pasquale's Cycling Adventure!



Wellness Assessment Navigation Tool

Participants greatly appreciate the Wellness Assessment Navigation Tool, which plays a key role in identifying the needs of new registrants and recommending appropriate programs. This ensures a personalized and supportive experience for each individual.

- 74% of persons diagnosed and their supporters complete the assessment.
- 100% of those individuals return to the center more than twice.

The tool also encourages participants to engage with our 7 Pillars of Wellness, using their assessment results to request programs that align with their unique needs and priorities.

Top Wellness Priorities Identified from Assessments:

- Emotional: 37.4%
- Physical: 34.8%
- Practical: 9.5%
- Social: 8.5%
- Informational: 8.2%
- Systemic: 1.6%



More About The 7 Pillars of Wellness



Cancer wellness is defined as a whole-person approach to support living well with cancer, at any stage of the cancer trajectory of care. Each person living with cancer is guided to address all their needs within all seven pillars.



Physical

Physical needs, including physical comfort, physio oncology evaluation, pain relief, symptom management, nutrition, and activities.



Emotional

Emotional needs, encompassing emotional wellbeing, counseling, sound healing meditation, and energy programs.



Spiritual

Spiritual needs, which involve fostering hope, a sense of belonging, and finding meaning and purpose in life, along with activities such as Tai Chi, journaling, and assorted workshops.



Social

Social needs, including interests such as photography and oil painting, family relationships, community involvement, and connecting with others in diverse support groups.



Informational

Informational needs, encompassing access to resources, referrals to external organizations for services at home, guidance on what to expect in cancer care, palliative care, or end-of-life situations, and information on various relevant topics.



Practical

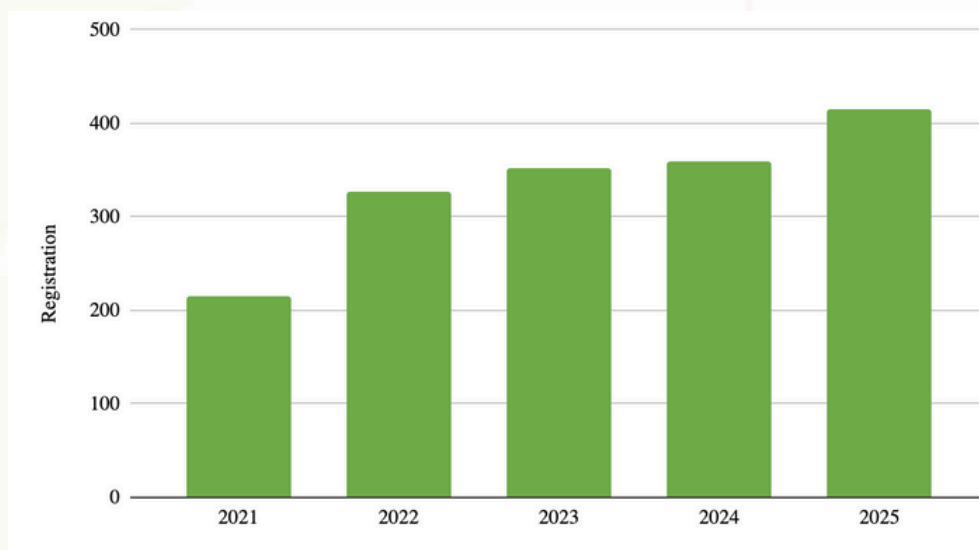
Practical needs, such as specialized occupational therapy for oncology evaluation to aid in daily living, including homemaking services and financial assistance.



Systemic

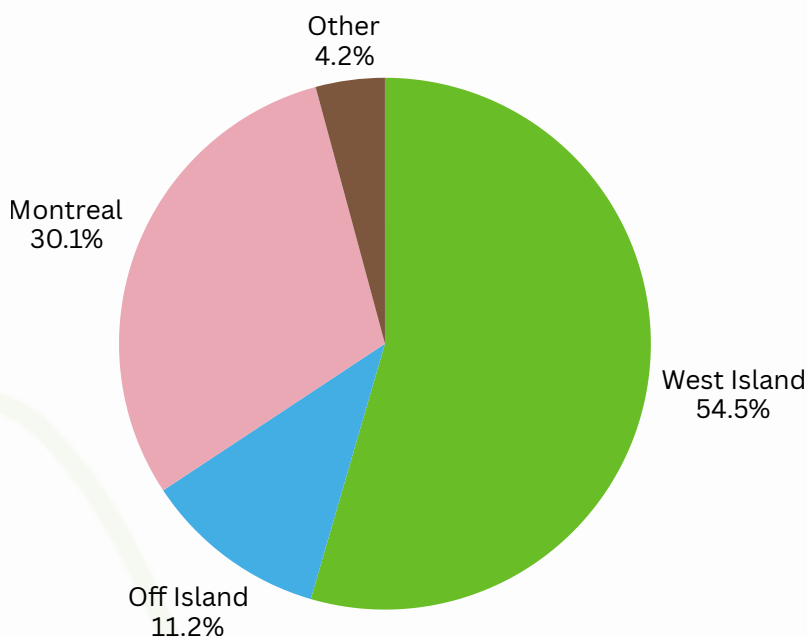
Systemic needs, such as navigating systems like the medical system.

Registrations

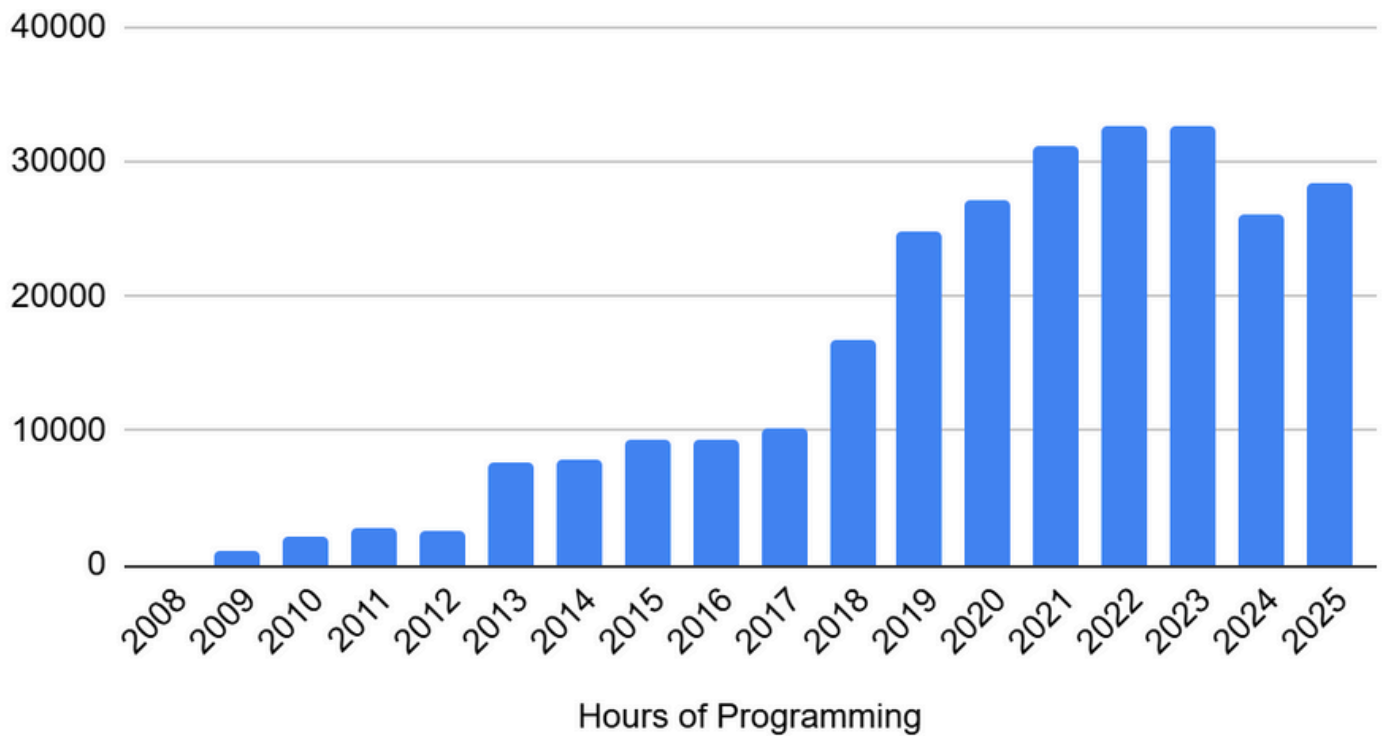


There has been a continued increase in registrations, reflecting not only a rise in overall community well-being but also a growing awareness of the Centre. This steady growth shows that more individuals feel comfortable seeking support and engaging with our programs since COVID.

Location of Participants



Programming Hours



We have seen an increase in programming since 2024, with growth in both in-person and virtual sessions.



Outreach Efforts

We continued to strengthen our community and professional connections, building awareness of cancer wellness and the resources available through the Centre. Our outreach efforts focused on education, collaboration, and expanding our impact both locally and nationally.



Professional and Hospital Partnerships

- Hosted the MUHC Educational Symposium for the second year, welcoming medical residents for a day of learning about cancer wellness.
- Continued meeting with healthcare and mental health professionals from Lakeshore, CHUM, MUHC, Jewish General, Sacré-Coeur, and other institutions to strengthen partnerships and awareness.
- Expanded outreach efforts to French hospitals to build stronger bilingual connections.
- Hosted Myeloma Canada for their workshop and presented our Centre to attendees.

Community Engagement and Appreciation

- Delivered flowers and messages of gratitude to nurses at seven Montreal hospitals during Nurse Appreciation Week.
- Participated in the Annual West Island Community Services Appreciation Wine and Cheese event at the Teresa Dellar Palliative Care Residence.
- Hosted booths at local community fairs to raise awareness of our programs.

Educational and Awareness Initiatives

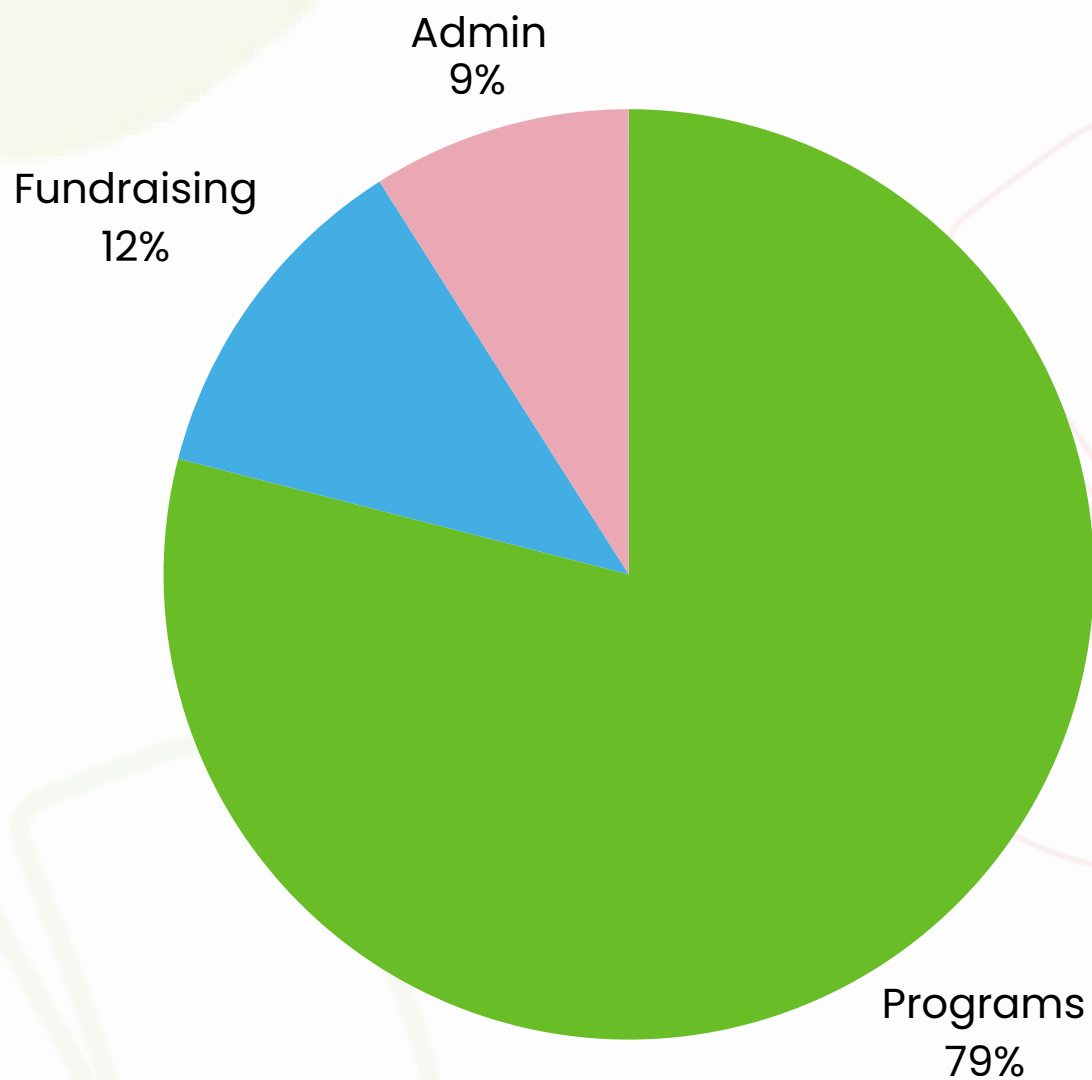
- Continued our quarterly newsletter highlighting cancer wellness, research, and referral information for professionals.
- Participated virtually in the Colorectal Cancer Community Conference to promote our services.
- Continued expanding our national reach, particularly in rural areas across Canada.

Financials

WEST ISLAND CANCER WELLNESS CENTRE
STATEMENT OF FINANCIAL POSITION
AS AT MAY 31, 2025

	Note	2025	2024
ASSETS			
CURRENT			
Cash and cash equivalents		\$ 1,061,925	\$ 1,543,671
Marketable securities	(3)	3,274,587	2,666,336
Term deposits	(4)	600,000	-
Accounts receivable		3,816	3,093
Interest receivable		31,241	-
Inventory		667	2,218
Prepaid expenses		3,568	1,601
		4,975,804	4,216,919
CAPITAL ASSETS	(5)	2,023,948	2,116,149
		\$ 6,999,752	\$ 6,333,068
LIABILITIES			
CURRENT			
Accounts payable and accrued liabilities		\$ 48,715	\$ 38,328
Deferred revenue	(6)	45,689	41,393
		94,404	79,721
NET ASSETS			
Unrestricted fund		1,425,343	978,653
Capital assets fund		2,023,948	2,116,149
Sustainability fund	(7)	3,456,057	3,158,545
		6,905,348	6,253,347
		\$ 6,999,752	\$ 6,333,068

Fund Allocation



Fundraising

We do not receive funding from the government, Canadian Cancer Society, Centraide, or any hospital. Our free programs and services are made possible thanks to the generosity of our community and fundraising efforts. While signature events like the *Challenge of the Brave* and our *Annual Golf Tournament* remain key contributors, we also rely on individuals and groups who organize third-party fundraisers to support the West Island Cancer Wellness Centre.



Challenge of the Brave



The 4th Annual Challenge of the Brave, a peer-to-peer fundraiser, is inspired by the concept of the Amazing Race, with our own unique spins. Our version is not only incredibly enjoyable but also significantly impactful, as all proceeds directly benefit the Centre. We are thrilled to announce that the April 2025 event raised over \$110,000.

**THANK YOU TO THE CHALLENGE OF THE BRAVE
COMMITTEE MEMBERS**

Special thanks to the City of Kirkland

Challenge of the Brave

LOCATIONS

John Abbott College

Noodle Empire ESports

Duke & Devines

Cedar Park Heights

Meades Park

Royal Westcourt Pickleball – Golf

West Island Mission

Pépinière Pierrefonds



Annual WICWC Golf Tournament



Our 13th Annual Golf Tournament at Summerlea Golf & Country Club raised over \$254,000. A sincere appreciation goes to our generous sponsors and committed committee members whose unwavering support brought this event to fruition.

GOLF EVENT ORGANIZING COMMITTEE

George Alexopoulos

David Bertrand

Michael Boychuk

Jay Deakin

Stacey Hoirch

John Kappos

Christopher Kovalchuk

Laurie Lincoln

Leslie Machan Jr.

David O'Hara

Alanna Roszkowski

Third Party Fundraisers



THANK YOU FOR CHOOSING THE WICWC

Each year, a diverse array of contributors, including individuals, families, sports teams, companies, and retail stores, organizes community fundraisers to support the West Island Cancer Wellness Centre. These events vary widely, from birthday parties encouraging donations in lieu of gifts to fashion shows.

Between June 1st, 2024 and May 31st, 2025, the community raised over \$59,000 for the Centre through third party events!

Third Party Hosts & Events



- Andrea Courey – Sound Healing
- Anne Louise Caron's Blanket Raffle
- Beaconsfield High School
- BMSP – Beaconsfield Men's Slo-Pitch
- Boutique Moda Elle Event
- Cormier & Gauthier – BBQ
- Dan Anton Steiner's Birthday Bowling Event
- DDO U18 Baseball
- Facebook Fundraisers
- Genie in a Bottle Project
- KOHL – Kirkland Oldtimers Hockey League Charity Tournament
- Nevine's Cookbook
- Crimson Cabaret Comedy Night
- Pasquale Cycles Canada
- PCOT – Pointe-Claire Oldtimers
- Scotiabank Hockey Tournament
- West Island Antique & Muscle Car Club – Car Show

Donor Recognition



Our existence relies on the generosity of our donors. The WICWC, along with our participants, extends heartfelt gratitude to each and every donor for their invaluable support.

Monthly Giving

Dedicated supporters of cancer wellness are passionate about enhancing the well-being of individuals facing cancer. We express our gratitude for your monthly contributions. Your ongoing support ensures that:

- All those living with cancer can benefit from free wellness programs.
- Our Big Yellow House remains a comforting refuge for cancer patients and their caregivers.
- Virtual classes are available to participants who may be too ill or distant to attend the Centre.
- No one has to face cancer in isolation, as we stand by their side every step of the way.

THANK YOU

Andre Chelini
Anne Clayden
Deirdre Lapointe
Geneviève Mongeau
Isabelle Ayoub
Judith Andrews
Kirk Llano

Laurie McKinnon
Maggie Costa
Nancy Stokes
Natasha L. Gould
Robert Gunther
Stacey Ann Hoirch
Virginia Myles

Legacy Promises

The following names are those who have pledged to protect the future of the WICWC by adding a donation in their Will. Your generosity and commitment to our cause are deeply appreciated. Thank you for your invaluable support, which will make a lasting impact on the WICWC.

THANK YOU

Sandy Fitzpatrick

Danielle Duc

Shirley Magwood

Anne Kealy & Paul Herrmann

Ian Townson & Virginia Shepley

Andre Chelini

Peter Alves & Lois Maeder Alves

Tamara Surtees

Laurie & Scott Traylen

Patricia Price

Laurene Cormier

Maggie Costa

Tony Zinno

Debbie Magwood

Marylene Franco

Janice Barnes & Larry Melton

ANONYMOUS

Huguette Constant

George Tooley

Suzanne Sevigny

Jasmine Ellemo

Usher Boxer

David and Beatrix Oram

Louise Houle

Anonymous

Geneviève De Broux

Our Donors

MAJOR DONORS

Bell Canada

CIBC

Construction Broccolini Inc

Deakin Realty

DLC Landscape Services

Elina and Giuseppe Borsellino Family Foundation

Eric T. Webster Foundation

Fondation Familiale Maria & Russell Hiscock Family Foundation

Grant & Kathy Gehlsen

Henri Family Foundation

Leonard T. Assaly Family Foundation

McKesson Canada

Olga Munari

Paul Normandin PLN Services Immobiliers Inc and PLN Real Estate

Services Inc.

Pfizer Canada Inc.

R. Howard Webster Foundation

ScotiaBank

The Tenaquip Foundation

West Island Community Shares

Our Donors

All Other Donors in Alphabetical Order

Every dollar donated is vital and met with heartfelt gratitude.

A. David Crowe Family Foundation	Amanda Kut	Anne Macdonald
AbbVie	Andre Chelini	Anne-Marie Brunelle
Adriana Ierfino	André Leduc	Annette Woolf
AGF Investments Inc	André Letourneau	Annie St-Jean
Akram Montajabiha	André Meloche	Anthony Chiotis
Alain Guay	Andrea Courey	Anthony Nelson
Alan Templeton	Andrea Feldman	Antinio Lombardi
Alan Thompson	Andrea Reilly	Antoine Dumas
Alanna Roszkowski	Andrew Teasell	Antoinette Tomasino- Carrier
Aldo Bravo	Angela Jones	Arthur & Opie Graddon
Alex Lifson	Angelina Marcovecchio	Arthur Shtrevensky
Alexa Landreville	Angelo Di Fino	Assurance Manocchio & Associés Inc
Alexis Marchand	Anita Iannuccilli	Audrey Woytiuk
Alfredo Zeppilli	Ann Raimondo Roach	Bartolo Gianni Guerrera
Algonquin Capital	Anna Cerone	Belden Canada Inc.
Ali Jammoul	Anna Graham	Belinda Gare
Alice & Angelo Cabral-Ribeiro	Anna Maria Mercuri	Betty Wells
Alice Dziedziczak	Anna Maria Trifiletti	Bev Oke-Hickey
Alison King	Anna Russo	Bianca Bucchi
Alison Macdonald	Anne and Paul Herrmann	Bianca Lallitto
Allan Gartshore	Anne Archambault	Bimcor Inc.
Allanna Cave	Anne Chauvin	
Allyson Budnik	Anne Clayden	

Our Donors

Birch Hill Equity Partners
Management Inc.

Bitumar Inc

Bob & Marg McEwen

Bob Harmidy

Bonnie Day

Boutique Moda Elle

Boychuk Family Foundation

Brandon Allen

Brasswater Inc.

Brian Bringolf

Brigitte Laberge-Brooks

Bryan Cooke

Cadillac Fairview Corp Ltd/La

Corp. Cadillac Fairview Ltée

Calm Inc.

Camionnage CP Inc.

Canada Life

Canso Investment Counsel Ltd.

Carin Smiley

Carla Canales

Carlo De Stefano

Carmela Jumeras

Carmen Chartier Ryser

Carol Guimond

Carol Macdonald

Carole Ede

Carolina Natale

Caroline Jefferson

Caroline Moreau

Caroline Samne

Catherine Gehan

Catherine Lafontaine

Catherine Renaud

Cathy McGuire

Cbre Limited

Cecile Bety

Céline Desmarais

Centraide du Grand

Montréal

Chris Wilson

Christina Antoniou

Christine Copeman

Christine Kirkman

Christine Moreau

Christine Seidl

Christopher Cwiklinski

Christopher Kovalchuk

Cindy Finn

Cindy Riding

Cine-Cast Inc.

Claire Gagné

Claret Asset Management

Claude Foucart

Claude Lazure

Claudette Rozon

Coleen Hreno

Colleen Glover

Corinne Waheed

Craft Public Relations Inc.

Crystal Murphy

Cyndee Ramu

Cynthia Ceccolini

Cynthia Charbonneau

Cynthia Ferlaino

Cynthia Fusco

Daiva Blynas

Dan Parkinson

Daniel Lacoste

Daniel Trottier

Daniel Vézina

Danielle Brisebois

Danielle Duc

Danielle Dumont

Daphne Ardell

Daphne Pontbriand

Darine Abdallah

Our Donors

David & Cathy Wilson

David Ades

David Aronovitch

David Bertrand

David Boyd

David Feher

David Gagnon

David Garforth

David Moyse

David O'Hara

David Oram

David Pemberton

Debbie Magwood

Debbie Pepper

Debby Verdino

Deborah Loyer

Deborah McGlynn

Deborah Wright

Deirdre Lapointe

Del Dumoulin

Delmar International Inc.

Deloitte

Denis Drolet

Denise Samne

Denyse Boivin

Desiree Ofter

Di Lillo Construction

Diana Lee

Diane De Grandmont

Diane Nener

Diane Sprackett

Diane St-Pierre

Dianne Warren

Dimitrios Christopoulos

Domenico Lermieri

Dominic Nero

Dominique Renaud

Domna Zervos

Don Baker

Don Field

Donald McInnis

Donald Rosenberger

Dor Docteur

Dory Sarkis

Douglas McCullough

Drain 3d Inc.

Dylan Tran

Dynamic Funds

Eila Jacobson Feher

Elena Enepekides

Elena Mollica

Elisabeth Montagne

Elise Conway

Elizabeth Bennett

Elizabeth Fini

Elizabeth Lefebvre

Elizabeth Tropea

Ellen Simpson

Elran

Elsbeth Stilton

Emily Furholter

Emily MacGowan

Emmanuel Autran Agence EA

Enrico Plomberie Richard

Leduc

Eric Arbour

Eric Sands

Eric Shintani

Erik Charton

Erin O'Brien

Ernest Tan

Express LDT Inc.

EY

Fauzia Sikender

Fei Wang

Fernando Di Caprio

Fetherstonhaugh Family

Foundation

Our Donors

Fran Pokorski Wilansky

France Chapdelaine

Frances MacCuaig

Francesca Riley

Francesco Di Nardo

Francine Giroto

Francine Guillemette

François Rainville

François Têtu

Francyne Poirier

Frank Merenda Inc.

Frank Tullio

Frederick Goldstein

Gabriel Flores

Gabrielle Corbeil

Gaby Chalifoux

Gail Shakes

Gary Finn

GDI Integrated Facility
Services

Genevieve De Broux

Geneviève Mongeau

George Bennett

George Papachristos

George Tooley

German Society of

Montreal

Gina Sarroino

Ginette Frigon

Giuseppina Caruso

Glenda Agyemang

Globe Electric

Gloria Samoszewski

Gordon Lynes

Greenlite Lighting Corp

Gunnar Sprauer

Gurpreet Kaur

Gyorgyi Kiefer

Habitations Raymond

Allard

Hassan N Taghvaï

Heather Allen

Heather Borrelli

Heather George

Heather Young

Helena Santos Vierra

Helena Scheffer

Howard Korzenstein

Ian Townson

IDC Worldsource

Ilda Guerrero

Indigo Consulting Canada

Irving Rother

Isaac Rosenthal

Isabelle Ayoub

Ismo Makkonen

Ivan Straznicky

Jacqueline Pereira-Duknic

Jacqueline Roberge

Jacqueline Wood

Jacques Coté

James & Audrey Riley

James Di Lella

James Mills

James Tooley

Jane Cibola

Jane Syme

Janine Renault

Jason Kendall

Jason Nelson

Jay Deakin

Jean and Stephen Duckett

Jean Claude Torchia

Jean Shepherd Lacombe

Jean-Marie Bourassa

Jean-Pierre Bedirian

Jeannie Vuksinic

Jeffrey Reid

Jelena Agla Pronina

Our Donors

Jennifer Cave	Julia Virginia Perlas	Kristine Ranete
Jennifer Cloutier	Julie Fairweather	Kubota Montréal
Jennifer Dionne	Julien Prenevost	Kyla Rhodes
Jennifer Glasgow	Justin Ricci	Lakeshore Soccer Team
Jennifer Renglich	Karen Chammas	Laporte Experts Conseils
Jennifer Robinson	Karen Slattery	Larry & Margaret Nachshen
Jenny Torchia	Karen Thomas	Family Fund
Jeremy Greenblatt	Karen Williams	Lauchie Fraser
Jerry Chia Yen Yao	Karl Guimont	Laura Girolami
Jesse Lehrman	Karven-Bermann Colas	Laura Gray
Jessica Delfino	Katherin Ivanov	Laura Sciascia
Joan Fournier	Katherine Beaumont	Laurence Demers
Joan Hervieux	Kathleen Brisson	Laurene Cormier
Joan Riley	Kathryn Gutkowski	Laurentide Controls Ltd
Joanne Thornton	Kathryn Pantemis	Laurie Lincoln
Jocelyne Laliberte	Keith Carpenter	Laurie McKinnon
John Deakin	Keith Landry	Lawrence Melton
John Murphy	Kelly Roughton	Lawrence Wilk
Jordan Romita	Kenneth W Cave	Lee Gregory
Joscelyne Banerjee	Kevin McVetty	Leigh Zinman
Josephine Ditrapani	Kevin Mohamed	Leonard Neirinck
Josie Sadorski	Kim Thornton	Les Entreprises Laurentien
Joyce Bergman	Kirk Llano	Électrique Inc.
Judith Andrews	Kosta Katsoulis	Les Habitations Sylvain
Judy Macdonald	KPMG	Ménard
Julia Legler	Kristina Macalanda	Lesley Pasquin

Our Donors

Leslie Sponder	Louise Sarrazin	Maria Carpini
Levine Family Fund	Louise Talbot	Maria Cucuzzella
Lilamma Joseph	Lower Canada College	Maria Pace
Lina Maiette	Lucia Mariani	Maria Simonetta
Lina Toundjian	Lucid Motors	Maria Venturino
Linda & Jean-Marc Vidal	Lyne Depatie	Marianne Salama
Linda Luft	Lyne Paquette	Marie Fedossow
Linda Mercier	Lynn Hendy	Marie-Andrée Crépeau
Linda Moras	Lynne Beauchemin	Mariejosee Bigras
Linda Ng Tong	Mackenzie Cave	Marielle Paquet
Linda Prunier	Madeleine Levesque	Marilyn Dew
Linda Thompson	Madeleine Martinse	Marilyn Parsons
Lisa Brady	Magali Picard	Mario Durante
Lisa Eades	Maggie Costa	Marisa Mannarino
Lisa Nelson	Manuel & Margaret Senra	Mark Weber
Lise Dalcourt Lono	Marc Chartrand	Martina Angenent
Lisette Noodelman	Marc Landreville	Martine Beauchamp
Litho-Pak Inc.	Marc Thibodeau	Mary Ellen Bishyk
Lois Cotton	Marc-André Littée	Mary Price
Lois Maeder Alves	Marcel Bourassa	Mary Wells
Lorna Gow	Marcel Brunet	Marylena Franco
Louise Devost	Marcel Morneault	Maryna Pletnova
Louise Joly	Marcel Nault	Maryse Bibeau
Louise Landreville	Marco Della Rocca	Massimo Raso
Louise Langlois	Margaret Bretin	Matthew Lemire
Louise Robillard Piché	Margot Harbich	Maxime Boissonneault

Our Donors

Maxime Brunet

Megan Smith

Melanie Lapointe

Melanie Nudleman

Melanie Richter

Melissa Ferlaino

Melissa MIGUELS

Mercedes Alvarez

Metro Richelieu Inc.

Michael E Kieran

Michael Eskenazi

Michael Labelle

Michael Wiener

Michel Roy

Michèle Véronneau

Micheline Garone

Michelle Mackinnon

Mindy Weigensberg

Miriam Khalil

Mirna Brancacci

Mitch Melnick

Mladen Palaic

Monbel Consultants Inc.

Monica Alves

Monica Flores

Monica Karam

Monique Beaupré-Lazure

Monique Genest

Monique Thonney

Montreal Mini-Storage

Morris & Rosalind

Goodman Family

Foundation

Muriel Longlade

Muriel Prince

Murielle Gravel

MYC Music for Young

Children®

Nadia Gerges

Nadim Finan

Nancy Kemp-Deakin

Nancy Ritcey

Nancy Shaw

Nancy Stokes

Nat Merenda

Natasha L. Gould

Nathalie Charland

McMillan

Nathalie Couturier

Neal McComb

Nevine Elchibini

Nicholas Chamandy

Nick Basciani

Nicodemo Giurleo

Nicola Di Nezza

Nicole Leduc

Nina Berkson

Nivine Barsoum

Norman Renglich

Novyc International Inc.

Olga Mora

Olivia Ripa

Olivia Torralbo

Pamela Currie

Paradisos Spa

Pascal Paradis-Théberge

Patrice Nzigamasabo

Patricia Dawe

Patricia Denis Boyer

Patricia Heczko Heidenreich

Patricia Kyriacos

Paul & Claudette Graddon

Paul Fischlin Services Inc

Paul Konig

Paul Murauskas

Paul Stinis

Paula Schwartz

Paulina Sokalski

Our Donors

Pauline Patulli	Rita Apa	Sandy Brassard
Penelope Dexter	Roaanne D'Amours	Sandy Fitzpatrick
Pepiniere Pierrefonds Inc.	Robert Arasimowicz	Sandy Fostaty
Peter Leupold	Robert Asch	Sanjiv Nundy
Peter Moundroukas	Robert Cressaty	Savills Toronto
Peter Nicholson	Robert Gunther	Scott Pichette
Phebra Canada Inc.	Robert Kravitz	Sean Machmer
Philip Stote	Ron Korzinstone	Sébastien Souigny
PHT Transport	Rosa Ferlaine	Serena Fett
Pierre Shousha	Rosefellow Developments	Serge Boucher
Pierre Turcotte	Inc	Shahpour Reza Yahyapour
Pina Merenda	Roy Baird	Shannon Wight
Placements Montrusco	Russell Hiscock	Shari Crystal-Altman
Bolton Inc	Ruth Fischer	Sharron Lipson & Allan
Planchers Bellefeuille	Ruth Lana Major	Lerman
Produits Intégrés Avior	Sabrina Ste-Marie	Sheila Laursen
Integrated Products	Saint Luke's	Shelley Rabinowitz
Pure Treats Inc	Parish/Fabrique Paroisse	Sherri MacCallum
Rachel Meunier	de St-Luc	Shirley & Hymie Klein
Rania Al Amir	Salim Tayae	Shirley Cannell
RBC Phillips, Hager & North	Sam Mancino	Shirley Lamb
Investment Counsel Inc.	Samir Homsy	Shirley Magwood
Reagan Niedan	Samira Masri	Silvia Marguglio
Rebecca Lewis	Sandra Chirico	Simon Harte
Richard Gagnon	Sandra Harte	Siu Ghee Tam
Rick Headrick	Sandra Noseworthy	Sofia Papapanagiotou

Our Donors

Sophie Orru	Valerie MacPherson
Sophie Primeau	Vanessa Chalhoub
St. Michael and All Angels Church	Véronique Untereiner
Stacey Hoirch	Viki Hountalas
Stephan Henske	Viktoria Fisher
Stephan Nappert	Ville de Baie D'Urfé
Stephane Charland	Ville de Beaconsfield
Stephanie Bentz	Ville de Kirkland
Stephanie Gunther	Ville de Pointe-Claire
Stephanie Haugwitz	Virginia Myles
Stephanie Steen	Virinder Dhir
Steve Beisswanger	Vivienne Morgan
Steve Greenstein	Walter Betz
Steve Tarling	Wayne Harmidy
Sue Maiorino	Wendy Maclean
Susan Davies	Wener Family Office
Susan Hawke	William Dawe
Susan Henderson	Yannick Rancourt
Susan Issenman	Yvan Roy
Susan Rhéaume	Yvonne Kleiner
Suzanne Mancuso	Zeller Family Foundation
Sylvia Kirstein	Zena Riff
Sylvie Laramée	Zengar Institue Inc
Sylvie Ouellet	Zoran Klobucar
Talya Abran-Bromley	ZZA Inc.

Gift In Kind

Andrea Courey
B Factory
Baton Rouge
Beaconsfield Golf Club
Bota Bota
CCM
CF Montreal
Château Vaudreuil
Christopher Kovalchuk
Cirka Distilleries
Club Automobile Triumph Canada Inc
Club de Hockey Canadien Inc.
David O'Hara
Diane Roszkowski Communications
Rosz Inc.
Distillerie 3 Lacs
DLC Greenteam (7574479 Canada
Inc)
Etiket
F45 Training Fairview West Island
Foodtastic
Four Seasons Hôtel Montréal
Frames To Go
Gym Fit Forme
Hed Rossi Enterprises
Henryka Ltd/Ltée
Hotel Birks Montreal
J. Sonic Services Inc.
Jay Peak Resort

John Murphy
Kim Blank LuLu Lanyards
Kurios Photography
La Trattoria
Lincoln Apartment Bakery
One Happy Potter
Orchestre FILMHarmonique
OSM Orchestre Symphonique de
Montréal MSO
Pharmaprix-Kirkland
Poutineville
Residence Inn Montreal Airport Marriott
Restaurant La Serenata
Restaurant Le Bienheureux
Robert Lamarre
Simply the Best Talent & Entertainment
Spa Essentiel by Esthétique Spa Munari
Summerlea Golf & Country Club
Sylvie Morel
Tazza di Mattina
Thomas Divisek Montreal Mobile Wash
TSN
Urban Legends Boxing
Vivier
Vladimir Stoev Paradisos Spa
Windmill Heights Golf Club
Zen Chez Vous

Service Partners

A heartfelt THANK YOU goes out to our fantastic partners who generously provide products and services that uphold our Centre. We could not operate without the generosity of partners who offer products and services at no cost to the Centre.



Abbott Nutrition has generously provided Ensure and Glucerna products to participants living with cancer for over ten years. Ensure® offers balanced nutrition to help adults meet their specific nutritional needs.



AFFARI designs spaces that inspire emotion, creativity, and innovation—collaborating with you every step of the way for a seamless experience.



Since 2016, Catsys has been providing the WICWC with quick and professional IT services.



Deakin Realty has offered real estate guidance and support for several years. Whether buying your first home, upgrading, or downsizing, their team is with you every step of the way.



Deritec Plomberie et Chauffage/Plomberie Richard Leduc has been supporting the WICWC's plumbing needs since 2023.

Service Partners



From maintenance to construction, and all the way through to snow removal, DLC is equipped to meet your seasonal needs, whatever they may be.



Genatec has provided exceptional software for our Living Well with Cancer Network, offering tailored business management solutions designed to meet each organization's unique needs.



Google hosts the organization's email.



For over five years, Greenlite has generously covered our postage costs. As a leader in energy-efficient lighting, they promote a community committed to sustainability.



Lulu Software has been providing the WICWC with a PDF software program since 2016.



Luminet Solutions Inc. has provided telecommunications products and services across Montreal, Quebec, and Canada for over 15 years.



As a nonprofit, we receive free software from Microsoft.

Service Partners



Access a wide range of office products at great prices with reliable next-day delivery, including supplies, stationery, printing materials, technology, equipment, and more.

**Sean Jackson
Installations Inc.**

Since 2024, Sean Jackson Installations Inc. has been providing repair and maintenance services for our fireplace, bringing immense comfort to our many participants who visit our library.



Strathmore brings their expertise to the WICWC by providing landscaping management since 2016.

Tim Hortons

Tim Hortons West Island provides us with ground coffee on an ongoing basis as well as treats or lunches for small groups on occasion.