



2024 - 2025  
ANNUAL  
**REPORT**



**WICWC.ORG**

**WEST ISLAND CANCER WELLNESS CENTRE**  
**CENTRE DE BIEN-ÊTRE DE L'OUEST-DE-L'ÎLE**  
**POUR PERSONNES ATTEINTES DE CANCER**

 [www.wicwc.org](http://www.wicwc.org)

115 Du Barry, Kirkland (QC) H9H 0C4  
Phone: (514) 695-9355 Fax: (514) 695-9315



# Table of Contents

Mission	3
A Word from the Executive Director	4
Wellness Team	5
Volunteers	8
University Partnerships	11
Programming	12
Financials	18
Fundraising	20
Donor Recognition	26
Service Partners	41

# About the WICWC

The West Island Cancer Wellness Centre (WICWC) is a registered charity dedicated to offering compassionate care and support to anyone experiencing cancer, either having it themselves or supporting someone with cancer. Our mission is to address the multifaceted needs of those living with cancer, encompassing the emotional, physical, spiritual, social, informational, practical, and systemic needs, collectively known as the 7 pillars of wellness.

Our programs and services are offered free of charge to our participants as a result of our fundraising efforts, and they aim to complement traditional medical approaches. Through our wellness programs, participants receive personalized support, acquire coping strategies, discover additional alternatives, and gain a deeper understanding of their specific condition. Our goal is to empower them to regain control of their lives, reduce isolation, and nurture hope, regardless of their disease's stage.



# A Word from our Executive Director

## Debbie Magwood, M.Ed., OPQ

Dear Friends, Supporters, and Members of the West Island Cancer Wellness Centre Community,

Reflecting on this past year, we were met with many challenges, but faced them with grace, dignity and perseverance. The West Island Cancer Wellness Centre stands as a beacon of hope, resilience, and unwavering support for those navigating the challenges of living with cancer.

This year has been a testament to the power of ingenuity as we had to pivot and find more effective and productive ways to fulfil our purpose. We have expanded our programs, automated and streamlined processes, all in the ultimate goal of maintaining a gold standard of care.

Every success we celebrate directly results from the dedication and generosity of our staff, volunteers, donors, and supporters. Your contributions have allowed us to provide whole-person Cancer Wellness care that addresses our members' physical, emotional, spiritual, systemic, informational, social, and practical needs. You have allowed us to offer a sanctuary where healing and hope flourish.

To our donors and volunteers, thank you! Your contribution fuels and inspires us. Without you, we could NOT do what we do.

To our participants and their families, you are the heart of our mission. Your strength, courage, and perseverance inspire us daily. Your stories of hope drive us to improve and innovate our services continually. We are committed to you and vow to continue fostering a community where every individual affected by cancer feels supported, valued, and empowered.

Thank you for being an integral part of our mission. Together, we are creating a brighter, more hopeful future for all those living with cancer.

With deepest appreciation and warmest regards,

A handwritten signature in cursive script that reads "Debbie".

# Wellness Team

## Staff

**Debbie Magwood, M.Ed., OPQ**  
WICWC Founder & Executive Director

**Alyssa Bracken**  
Marketing & Communications  
Coordinator

**Sandy Fitzpatrick, RN**  
Participant Care Coordinator

**Tanya Forward**  
Development Assistant

**Nadia Gerges**  
Programming Coordinator

**Michelina Perrotta, CPA**  
Finance Coordinator

**Melanie Richter, MBA, CFRE**  
Director of Fund Development

**Amanda van Rootselaar**  
Receptionist/Program Assistant

**Julie Szalai**  
Participant Relations Coordinator

**Stacey Waks, MA, CCC**  
Support and Outreach Coordinator

**Alisson Weiss**  
Events Coordinator



## Board of Directors

**Debbie Magwood, M.Ed., OPQ President**

WICWC Founder & Executive Director

**Jay Deakin, Chair**

Deakin Realty, Certified Real Estate Broker, Agency Executive Officer & Managing Partner

**Dimitrios Christopoulos, Director**

Scotiabank

District Vice President, Montreal West

**Alanna Roszkowski, Director**

DLC, Chief Operating Officer

**Fauzia Sikender, Director**

Manager Placements, Awards, Events/Senior Manager Corporate Talent Air Canada

**Laurie Traylen, Director**

The Study, Director of Athletics (Retired)

**Tony Zinno, Director**

Zinno Zappitelli Architects, Architect

## Financial Advisory Committee

**Michael Boychuk**

Bimcor, President & CEO (Retired)

**Russell J. Hiscock**

CN Investment Division, President & CEO (Retired)

# Medical & Wellness Advisory Committee

**Debbie Magwood, M.Ed., OPQ**

Founder & Executive Director, WICWC

**Cindy Finn, Ph.D. OPQ**

Director, Student Services, LBPSB

**Shereen Ghali, MD**

Hematologist/Oncologist Lakeshore  
General Hospital

**Lucy Gilbert, MD**

Professor, Oncology; Obstetrics &  
Gynecology, McGill University Health  
Centre

**Debbie Loyer, MDCM, FRCP**

Pediatrician, Montreal Children's  
Hospital

**Nada Nasreddine, CDE**

Owner, Pharmaprix Beaconsfield &  
Kirkland

**Marco Vernacchia**

Pharmacist-Owner, Pharmaprix,  
Pointe Claire

# Volunteers

Our amazing volunteers continue to be the heart of everything we do. We sincerely thank those who generously share their time and talents to support individuals living with cancer. Your commitment truly makes a difference. Thank you for being an integral part of our community and helping us make a lasting impact.



## Reception Support

Celine Audet

Jennifer Byrns

Marie-Andrée Crepeau

Kim Denver

Barbara Luthi

Linda vanBoncoeur

Eileen Holden

Devki Vaida

Anika Kumar

Vydeki Sandralingam

Olga Novikov

Johanne Pelletier

## Wellness Administrators

Megan Hayes

Carolyn Cunnison

Jennifer Byrns

Susan Phillips

Jocelyn Sklivas

## Wellness Guides

Tanya Brasseur

Sylvia Papazian

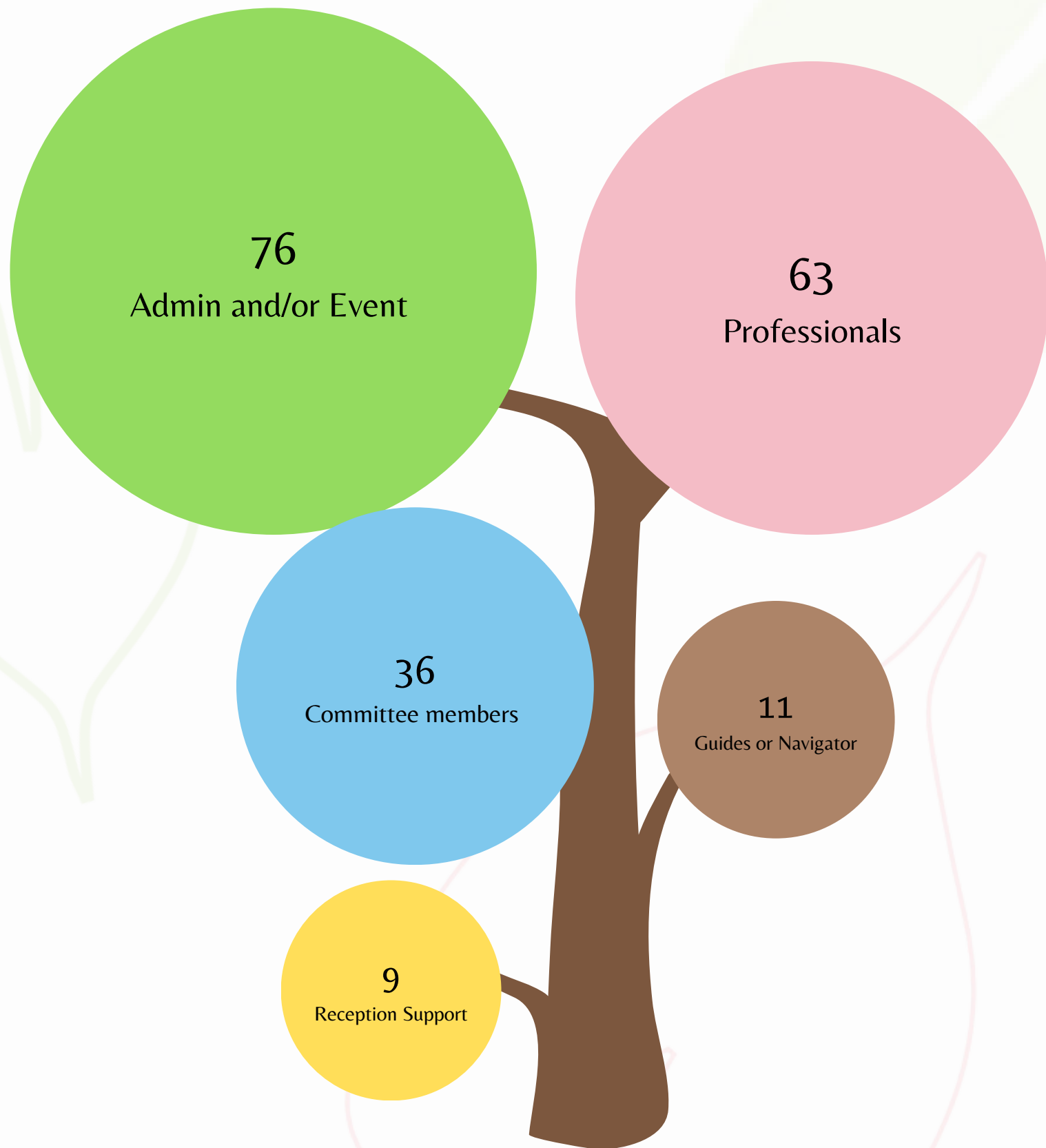
Kayla Durante

Helen Seremetis

Kathy Kovacs

Liane Laberge

# Volunteers



# Wellness Professionals

We express profound appreciation to our volunteer professionals who dedicate their time and expertise to help our participants live well with cancer.

Talya Abran-Bromley  
Christian Aubert  
Monique Arseneault  
Stefania Arrizza  
Sylvie Bisson  
Leonora Bassrei  
Jena Bertagnolli  
Susan Byrne  
Susane Cintra Borja  
Michelle Champagne  
Sarah Charles  
Patria Cesta-  
Papathanasopoulos  
Andrea Courey  
Karyn D'Amour  
Francine Duhamel  
Nevine Elchibini  
Jasmine Ellemo  
Debbie Esplin  
Maria Esposito  
Debra Ganong  
Robin Glance  
Giuliana Giannini

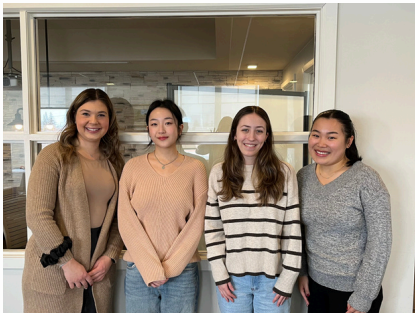
D Cheryl Harrel  
Shelley Hall  
Michel Harpin  
Maryse Hudon  
Karen Jesseau  
Matteo Iacobelli  
Laura Kestenberg  
Dave Lewis  
Paola Lebrun  
Brigitte Levesque  
Jo-Lynn Matar  
Daphne McGuire  
Cathy McGuire  
Danielle Monton  
Olga Munari  
Susan Murphy  
Kenzie Nickerson  
Jaden Obisanya  
Erin O'Loughlin  
Gina Patricco  
Lesley Pasquin  
Joanne Pasquin  
Ingrid Power

Raha Ramanarivo  
Olivia Rippa  
ulia Rodrigues  
Natalia Rodriguez  
Audrey Laugier Saint-  
Antonin  
Elicia Sevy-Hassan  
Stephen Schettini  
saura Schembi  
Fariba Salehi  
May Stern  
Vanessa Smrk  
Samya Tatone  
Jeannie Trubiano  
Marianne Truong  
Sandra Viscuso  
Lila Weitz  
Maged Youssef  
Paola Lebrun

# University Partnerships

We are very proud to partner with multiple universities, providing internships to their students at the Centre. These internships not only enable students to acquire valuable work experience but also allow us to leverage their time and talent. This year, we are fortunate to maintain existing partnerships.

## McGill University (BNI) Nursing Students



Nursing students completed their final STAGE placement with a focus on the post-treatment challenges faced by individuals living with cancer. Their project explored the mental health needs of cancer survivors and provided recommendations to improve access to mental health support based on their research and community engagement.

## Concordia University Arts Program



The students were in charge of planning an 8-week drawing technique class where they showcased their teaching and arts skills. Throughout their 8-week term they were assessed by a Teacher Assistant from the Arts Department.

## Past Partnerships

- Concordia University: Drama Therapy, Music Therapy
- Dalhousie University: Social Work
- John Abbott College: Nursing, Social Work, Graphic Design
- McGill University: Kinesiology, Social Work, Medicine (residents)
- Queens University: Rehabilitation Therapy
- University of Montreal: Social Work, Nursing
- Yorkville University: Social Work

# Programming

## Supporter Initiative



This year, we placed a strong focus on recognizing and supporting those who stand beside individuals living with cancer through our new Supporter Initiative. As part of this effort, we transitioned from using the term caregiver to supporter, a change that better reflects the diverse ways people provide care and encouragement to their loved ones.

To honour their invaluable role and promote their well-being, we introduced a monthly workshop highlighting:

- Identifying the Supporter
- Self-Care Strategies
- Community and Support
- Explore Our Services

We also launched a Peer-to-Peer Support Group for Supporters, providing a welcoming space to share experiences, exchange information, and receive confidential support, reinforcing that supporters are essential to the well-being of others and equally deserving of care themselves.

## Zoom into Wellness

Each year, we host our Zoom into Wellness sessions, free educational workshops open to the public, designed to inform, inspire, and promote wellness by sharing expert knowledge.

This year's sessions included:

- Dr. Joe Schwarcz: Humor, Magic, and Health
- Dr. Celena Scheede-Bergdahl: Demystifying the Exercise Prescription
- Nurses from Lakeshore and St. Mary's Hospital: Navigating the Complexities of Healthcare
- Pasquale Petrella and Chantale Massicotte: Pasquale's Cycling Adventure!



# Wellness Assessment Navigation Tool

Participants greatly appreciate the Wellness Assessment Navigation Tool, which plays a key role in identifying the needs of new registrants and recommending appropriate programs. This ensures a personalized and supportive experience for each individual.

- 74% of persons diagnosed and their supporters complete the assessment.
- 100% of those individuals return to the center more than twice.

The tool also encourages participants to engage with our 7 Pillars of Wellness, using their assessment results to request programs that align with their unique needs and priorities.

## Top Wellness Priorities Identified from Assessments:

- Emotional: 37.4%
- Physical: 34.8%
- Practical: 9.5%
- Social: 8.5%
- Informational: 8.2%
- Systemic: 1.6%



# More About The 7 Pillars of Wellness



Cancer wellness is defined as a whole-person approach to support living well with cancer, at any stage of the cancer trajectory of care. Each person living with cancer is guided to address all their needs within all seven pillars.



Physical

Physical needs, including physical comfort, physio oncology evaluation, pain relief, symptom management, nutrition, and activities.



Emotional

Emotional needs, encompassing emotional wellbeing, counseling, sound healing meditation, and energy programs.



Spiritual

Spiritual needs, which involve fostering hope, a sense of belonging, and finding meaning and purpose in life, along with activities such as Tai Chi, journaling, and assorted workshops.



Social

Social needs, including interests such as photography and oil painting, family relationships, community involvement, and connecting with others in diverse support groups.



Informational

Informational needs, encompassing access to resources, referrals to external organizations for services at home, guidance on what to expect in cancer care, palliative care, or end-of-life situations, and information on various relevant topics.



Practical

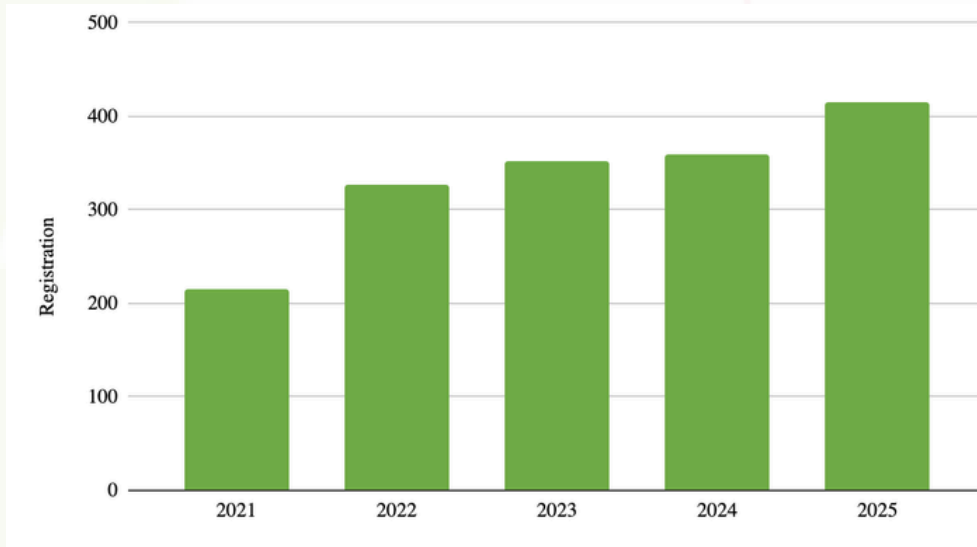
Practical needs, such as specialized occupational therapy for oncology evaluation to aid in daily living, including homemaking services and financial assistance.



Systemic

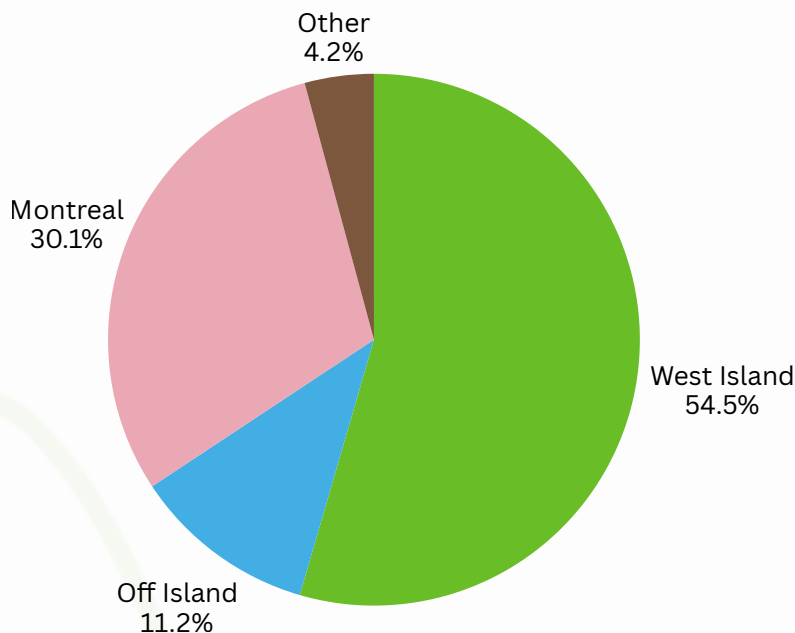
Systemic needs, such as navigating systems like the medical system.

# Registrations

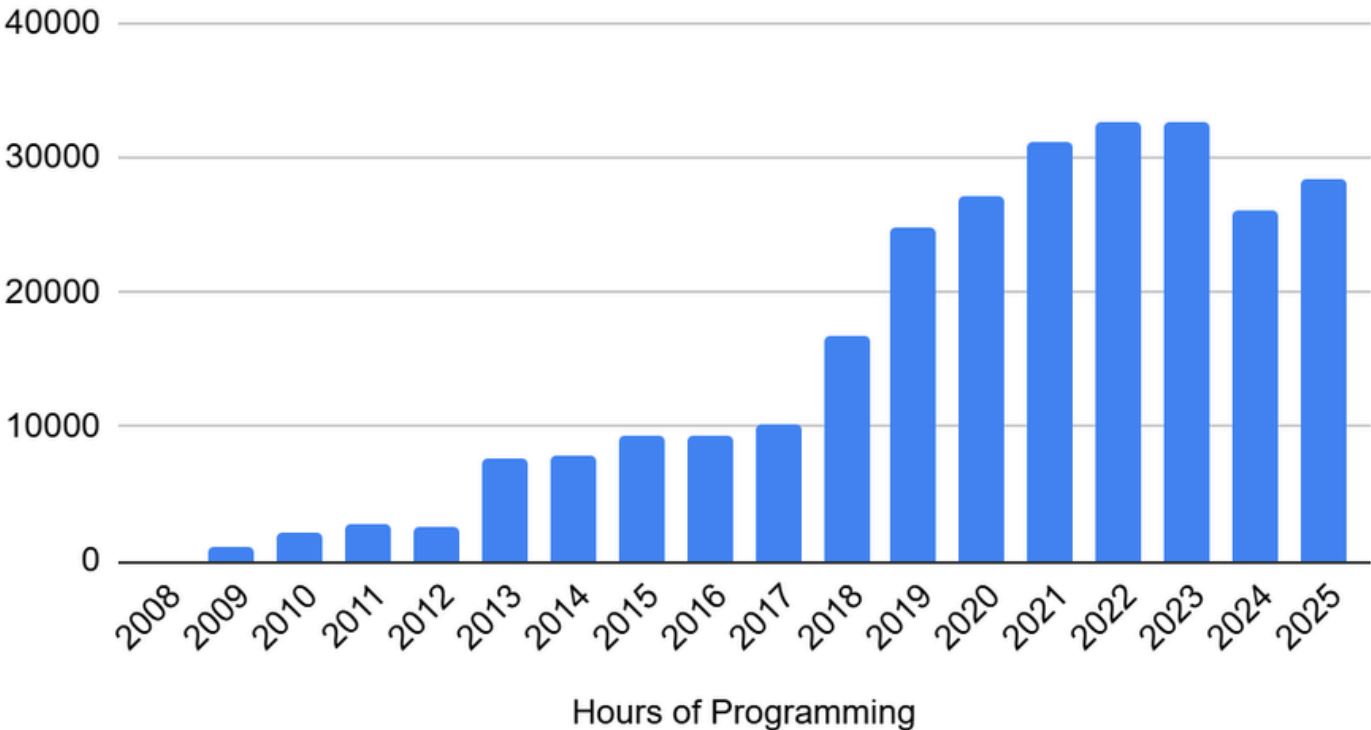


There has been a continued increase in registrations, reflecting not only a rise in overall community well-being but also a growing awareness of the Centre. This steady growth shows that more individuals feel comfortable seeking support and engaging with our programs since COVID.

# Location of Participants



# Programming Hours



We have seen an increase in programming since 2024, with growth in both in-person and virtual sessions.



# Outreach Efforts

We continued to strengthen our community and professional connections, building awareness of cancer wellness and the resources available through the Centre. Our outreach efforts focused on education, collaboration, and expanding our impact both locally and nationally.



## Professional and Hospital Partnerships

- Hosted the MUHC Educational Symposium for the second year, welcoming medical residents for a day of learning about cancer wellness.
- Continued meeting with healthcare and mental health professionals from Lakeshore, CHUM, MUHC, Jewish General, Sacré-Coeur, and other institutions to strengthen partnerships and awareness.
- Expanded outreach efforts to French hospitals to build stronger bilingual connections.
- Hosted Myeloma Canada for their workshop and presented our Centre to attendees.

## Community Engagement and Appreciation

- Delivered flowers and messages of gratitude to nurses at seven Montreal hospitals during Nurse Appreciation Week.
- Participated in the Annual West Island Community Services Appreciation Wine and Cheese event at the Teresa Dellar Palliative Care Residence.
- Hosted booths at local community fairs to raise awareness of our programs.

## Educational and Awareness Initiatives

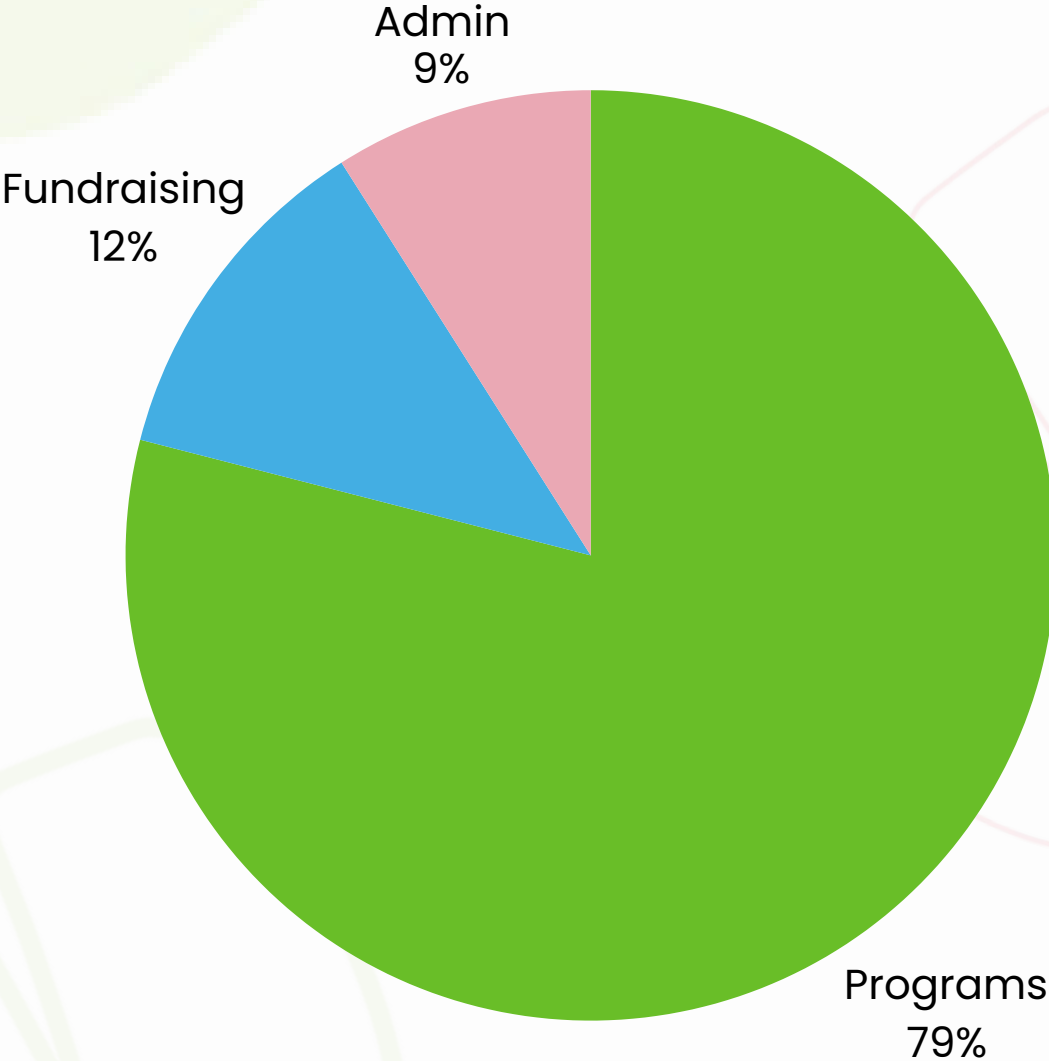
- Continued our quarterly newsletter highlighting cancer wellness, research, and referral information for professionals.
- Participated virtually in the Colorectal Cancer Community Conference to promote our services.
- Continued expanding our national reach, particularly in rural areas across Canada.

# Financials

**WEST ISLAND CANCER WELLNESS CENTRE  
STATEMENT OF FINANCIAL POSITION  
AS AT MAY 31, 2025**

	<i>Note</i>	2025	2024
<b>ASSETS</b>			
<b>CURRENT</b>			
Cash and cash equivalents		\$ 1,061,925	\$ 1,543,671
Marketable securities	(3)	3,274,587	2,666,336
Term deposits	(4)	600,000	-
Accounts receivable		3,816	3,093
Interest receivable		31,241	-
Inventory		667	2,218
Prepaid expenses		3,568	1,601
		<b>4,975,804</b>	<b>4,216,919</b>
<b>CAPITAL ASSETS</b>	(5)	<b>2,023,948</b>	<b>2,116,149</b>
		<b>\$ 6,999,752</b>	<b>\$ 6,333,068</b>
<b>LIABILITIES</b>			
<b>CURRENT</b>			
Accounts payable and accrued liabilities		\$ 48,715	\$ 38,328
Deferred revenue	(6)	45,689	41,393
		<b>94,404</b>	<b>79,721</b>
<b>NET ASSETS</b>			
Unrestricted fund		1,425,343	978,653
Capital assets fund		2,023,948	2,116,149
Sustainability fund	(7)	3,456,057	3,158,545
		<b>6,905,348</b>	<b>6,253,347</b>
		<b>\$ 6,999,752</b>	<b>\$ 6,333,068</b>

# Fund Allocation



# Fundraising

We do not receive funding from the government, Canadian Cancer Society, Centraide, or any hospital. Our free programs and services are made possible thanks to the generosity of our community and fundraising efforts. While signature events like the *Challenge of the Brave* and our *Annual Golf Tournament* remain key contributors, we also rely on individuals and groups who organize third-party fundraisers to support the West Island Cancer Wellness Centre.



# Challenge of the Brave



The 4th Annual Challenge of the Brave, a peer-to-peer fundraiser, is inspired by the concept of the Amazing Race, with our own unique spins. Our version is not only incredibly enjoyable but also significantly impactful, as all proceeds directly benefit the Centre. We are thrilled to announce that the April 2025 event raised over \$110,000.

**THANK YOU TO THE CHALLENGE OF THE BRAVE  
COMMITTEE MEMBERS**

*Special thanks to the City of Kirkland*

# Challenge of the Brave

## LOCATIONS

John Abbott College

Noodle Empire ESports

Duke & Devines

Cedar Park Heights

Meades Park

Royal Westcourt Pickleball – Golf

West Island Mission

Pépinière Pierrefonds



# Annual WICWC Golf Tournament



Our 13th Annual Golf Tournament at Summerlea Golf & Country Club raised over \$254,000. A sincere appreciation goes to our generous sponsors and committed committee members whose unwavering support brought this event to fruition.

## **GOLF EVENT ORGANIZING COMMITTEE**

George Alexopoulos

Stacey Hoirch

Leslie Machan Jr.

David Bertrand

John Kappos

David O'Hara

Michael Boychuk

Christopher Kovalchuk

Alanna Roszkowski

Jay Deakin

Laurie Lincoln

# Third Party Fundraisers



## THANK YOU FOR CHOOSING THE WICWC

Each year, a diverse array of contributors, including individuals, families, sports teams, companies, and retail stores, organizes community fundraisers to support the West Island Cancer Wellness Centre. These events vary widely, from birthday parties encouraging donations in lieu of gifts to fashion shows.

Between June 1st, 2024 and May 31st, 2025, the community raised over \$59,000 for the Centre through third party events!

# Third Party Hosts & Events



- Andrea Courey – Sound Healing
- Anne Louise Caron's Blanket Raffle
- Beaconsfield High School
- BMSP – Beaconsfield Men's Slo-Pitch
- Boutique Moda Elle Event
- Cormier & Gauthier – BBQ
- Dan Anton Steiner's Birthday Bowling Event
- DDO U18 Baseball
- Facebook Fundraisers
- Genie in a Bottle Project
- KOHL – Kirkland Oldtimers Hockey League Charity Tournament
- Nevine's Cookbook
- Crimson Cabaret Comedy Night
- Pasquale Cycles Canada
- PCOT – Pointe-Claire Oldtimers
- Scotiabank Hockey Tournament
- West Island Antique & Muscle Car Club – Car Show

# Donor Recognition



Our existence relies on the generosity of our donors. The WICWC, along with our participants, extends heartfelt gratitude to each and every donor for their invaluable support.

# Monthly Giving

Dedicated supporters of cancer wellness are passionate about enhancing the well-being of individuals facing cancer. We express our gratitude for your monthly contributions. Your ongoing support ensures that:

- All those living with cancer can benefit from free wellness programs.
- Our Big Yellow House remains a comforting refuge for cancer patients and their caregivers.
- Virtual classes are available to participants who may be too ill or distant to attend the Centre.
- No one has to face cancer in isolation, as we stand by their side every step of the way.

## THANK YOU

Andre Chelini

Anne Clayden

Deirdre Lapointe

Geneviève Mongeau

Isabelle Ayoub

Judith Andrews

Kirk Llano

Laurie McKinnon

Maggie Costa

Nancy Stokes

Natasha L. Gould

Robert Gunther

Stacey Ann Hoirch

Virginia Myles

# Legacy Promises

The following names are those who have pledged to protect the future of the WICWC by adding a donation in their Will. Your generosity and commitment to our cause are deeply appreciated. Thank you for your invaluable support, which will make a lasting impact on the WICWC.

## THANK YOU

Sandy Fitzpatrick

Danielle Duc

Shirley Magwood

Anne Kealy & Paul Herrmann

Ian Townson & Virginia Shepley

Andre Chelini

Peter Alves & Lois Maeder Alves

Tamara Surtees

Laurie & Scott Traylen

Patricia Price

Laurene Cormier

Maggie Costa

Tony Zinno

Debbie Magwood

Marylene Franco

Janice Barnes & Larry Melton

ANONYMOUS

Huguette Constant

George Tooley

Suzanne Sevigny

Jasmine Ellemo

Usher Boxer

David and Beatrix Oram

Louise Houle

Anonymous

Geneviève De Broux

# Our Donors

## MAJOR DONORS

Bell Canada

CIBC

Construction Broccolini Inc

Deakin Realty

DLC Landscape Services

Elina and Giuseppe Borsellino Family Foundation

Eric T. Webster Foundation

Fondation Familiale Maria & Russell Hiscock Family Foundation

Grant & Kathy Gehlsen

Henri Family Foundation

Leonard T. Assaly Family Foundation

McKesson Canada

Olga Munari

Paul Normandin PLN Services Immobiliers Inc and PLN Real Estate

Services Inc.

Pfizer Canada Inc.

R. Howard Webster Foundation

ScotiaBank

The Tenaquip Foundation

West Island Community Shares

# Our Donors

## All Other Donors in Alphabetical Order

Every dollar donated is vital and met with heartfelt gratitude.

A. David Crowe Family Foundation	Amanda Kut	Anne Macdonald
AbbVie	Andre Chelini	Anne-Marie Brunelle
Adriana Ierfino	André Leduc	Annette Woolf
AGF Investments Inc	André Letourneau	Annie St-Jean
Akram Montajabiha	André Meloche	Anthony Chiotis
Alain Guay	Andrea Courey	Anthony Nelson
Alan Templeton	Andrea Feldman	Antinio Lombardi
Alan Thompson	Andrea Reilly	Antoine Dumas
Alanna Roszkowski	Andrew Teasell	Antoinette Tomasino- Carrier
Aldo Bravo	Angela Jones	Arthur & Opie Graddon
Alex Lifson	Angelina Marcovecchio	Arthur Shtrevensky
Alexa Landreville	Angelo Di Fino	Assurance Manocchio & Associés Inc
Alexis Marchand	Anita Iannuccilli	Audrey Woytiuk
Alfredo Zeppilli	Ann Raimondo Roach	Bartolo Gianni Guerrera
Algonquin Capital	Anna Cerone	Belden Canada Inc.
Ali Jammoul	Anna Graham	Belinda Gare
Alice & Angelo Cabral-Ribeiro	Anna Maria Mercuri	Betty Wells
Alice Dziedziczak	Anna Maria Trifiletti	Bev Oke-Hickey
Alison King	Anna Russo	Bianca Bucchi
Alison Macdonald	Anne and Paul Herrmann	Bianca Lallitto
Allan Gartshore	Anne Archambault	Bimcor Inc.
Allanna Cave	Anne Chauvin	
Allyson Budnik	Anne Clayden	

# Our Donors

Birch Hill Equity Partners

Management Inc.

Bitumar Inc

Bob & Marg McEwen

Bob Harmidy

Bonnie Day

Boutique Moda Elle

Boychuk Family Foundation

Brandon Allen

Brasswater Inc.

Brian Bringolf

Brigitte Laberge-Brooks

Bryan Cooke

Cadillac Fairview Corp Ltd/La

Corp. Cadillac Fairview Ltée

Calm Inc.

Camionnage CP Inc.

Canada Life

Canso Investment Counsel Ltd.

Carin Smiley

Carla Canales

Carlo De Stefano

Carmela Jumeras

Carmen Chartier Ryser

Carol Guimond

Carol Macdonald

Carole Ede

Carolina Natale

Caroline Jefferson

Caroline Moreau

Caroline Samne

Catherine Gehan

Catherine Lafontaine

Catherine Renaud

Cathy McGuire

Cbre Limited

Cecile Bety

Céline Desmarais

Centraide du Grand

Montréal

Chris Wilson

Christina Antoniou

Christine Copeman

Christine Kirkman

Christine Moreau

Christine Seidl

Christopher Cwiklinski

Christopher Kovalchuk

Cindy Finn

Cindy Riding

Cine-Cast Inc.

Claire Gagné

Claret Asset Management

Claude Foucart

Claude Lazure

Claudette Rozon

Coleen Hreno

Colleen Glover

Corinne Waheed

Craft Public Relations Inc.

Crystal Murphy

Cyndee Ramu

Cynthia Ceccolini

Cynthia Charbonneau

Cynthia Ferlaino

Cynthia Fusco

Daiva Blynas

Dan Parkinson

Daniel Lacoste

Daniel Trottier

Daniel Vézina

Danielle Brisebois

Danielle Duc

Danielle Dumont

Daphne Ardell

Daphne Pontbriand

Darine Abdallah

# Our Donors

David & Cathy Wilson

David Ades

David Aronovitch

David Bertrand

David Boyd

David Feher

David Gagnon

David Garforth

David Moyse

David O'Hara

David Oram

David Pemberton

Debbie Magwood

Debbie Pepper

Debby Verdino

Deborah Loyer

Deborah McGlynn

Deborah Wright

Deirdre Lapointe

Del Dumoulin

Delmar International Inc.

Deloitte

Denis Drolet

Denise Samne

Denyse Boivin

Desiree Ofter

Di Lillo Construction

Diana Lee

Diane De Grandmont

Diane Nener

Diane Sprackett

Diane St-Pierre

Dianne Warren

Dimitrios Christopoulos

Domenico Lermieri

Dominic Nero

Dominique Renaud

Domna Zervos

Don Baker

Don Field

Donald McInnis

Donald Rosenberger

Dor Docteur

Dory Sarkis

Douglas McCullough

Drain 3d Inc.

Dylan Tran

Dynamic Funds

Eila Jacobson Feher

Elena Enepekides

Elena Mollica

Elisabeth Montagne

Elise Conway

Elizabeth Bennett

Elizabeth Fini

Elizabeth Lefebvre

Elizabeth Tropea

Ellen Simpson

Elran

Elspeth Stilton

Emily Furholter

Emily MacGowan

Emmanuel Autran Agence EA

Enrico Plomberie Richard

Leduc

Eric Arbour

Eric Sands

Eric Shintani

Erik Charton

Erin O'Brien

Ernest Tan

Express LDT Inc.

EY

Fauzia Sikender

Fei Wang

Fernando Di Caprio

Fetherstonhaugh Family

Foundation

# Our Donors

Fran Pokorski Wilansky

France Chapdelaine

Frances MacCuaig

Francesca Riley

Francesco Di Nardo

Francine Giroto

Francine Guillemette

François Rainville

François Têtu

Francyne Poirier

Frank Merenda Inc.

Frank Tullio

Frederick Goldstein

Gabriel Flores

Gabrielle Corbeil

Gaby Chalifoux

Gail Shakes

Gary Finn

GDI Integrated Facility  
Services

Genevieve De Broux

Geneviève Mongeau

George Bennett

George Papachristos

George Tooley

German Society of

Montreal

Gina Sarroino

Ginette Frigon

Giuseppina Caruso

Glenda Agyemang

Globe Electric

Gloria Samoszewski

Gordon Lynes

Greenlite Lighting Corp

Gunnar Sprauer

Gurpreet Kaur

Gyorgyi Kiefer

Habitations Raymond

Allard

Hassan N Taghvaï

Heather Allen

Heather Borrelli

Heather George

Heather Young

Helena Santos Vierra

Helena Scheffer

Howard Korzenstein

Ian Townson

IDC Worldsource

Ilda Guerrero

Indigo Consulting Canada

Irving Rother

Isaac Rosenthal

Isabelle Ayoub

Ismo Makkonen

Ivan Straznicky

Jacqueline Pereira-Duknic

Jacqueline Roberge

Jacqueline Wood

Jacques Coté

James & Audrey Riley

James Di Lella

James Mills

James Tooley

Jane Cibola

Jane Syme

Janine Renault

Jason Kendall

Jason Nelson

Jay Deakin

Jean and Stephen Duckett

Jean Claude Torchia

Jean Shepherd Lacombe

Jean-Marie Bourassa

Jean-Pierre Bedirian

Jeannie Vuksinic

Jeffrey Reid

Jelena Agla Pronina

# Our Donors

Jennifer Cave  
Jennifer Cloutier  
Jennifer Dionne  
Jennifer Glasgow  
Jennifer Renglich  
Jennifer Robinson  
Jenny Torchia  
Jeremy Greenblatt  
Jerry Chia Yen Yao  
Jesse Lehrman  
Jessica Delfino  
Joan Fournier  
Joan Hervieux  
Joan Riley  
Joanne Thornton  
Jocelyne Laliberte  
John Deakin  
John Murphy  
Jordan Romita  
Joscelyne Banerjee  
Josephine Ditrapani  
Josie Sadorski  
Joyce Bergman  
Judith Andrews  
Judy Macdonald  
Julia Legler  
Julia Virginia Perlas  
Julie Fairweather  
Julien Prenevost  
Justin Ricci  
Karen Chammas  
Karen Slattery  
Karen Thomas  
Karen Williams  
Karl Guimont  
Karven-Bermann Colas  
Katherin Ivanov  
Katherine Beaumont  
Kathleen Brisson  
Kathryn Gutkowski  
Kathryn Pantemis  
Keith Carpenter  
Keith Landry  
Kelly Roughton  
Kenneth W Cave  
Kevin McVetty  
Kevin Mohamed  
Kim Thornton  
Kirk Llano  
Kosta Katsoulis  
KPMG  
Kristina Macalanda  
Kristine Ranete  
Kubota Montréal  
Kyla Rhodes  
Lakeshore Soccer Team  
Laporte Experts Conseils  
Larry & Margaret Nachshen  
Family Fund  
Lauchie Fraser  
Laura Girolami  
Laura Gray  
Laura Sciascia  
Laurence Demers  
Laurene Cormier  
Laurentide Controls Ltd  
Laurie Lincoln  
Laurie McKinnon  
Lawrence Melton  
Lawrence Wilk  
Lee Gregory  
Leigh Zinman  
Leonard Neirinck  
Les Entreprises Laurentien  
Électrique Inc.  
Les Habitations Sylvain  
Ménard  
Lesley Pasquin

# Our Donors

Leslie Sponder  
Levine Family Fund  
Lilamma Joseph  
Lina Maiette  
Lina Toundjian  
Linda & Jean-Marc Vidal  
Linda Luft  
Linda Mercier  
Linda Moras  
Linda Ng Tong  
Linda Prunier  
Linda Thompson  
Lisa Brady  
Lisa Eades  
Lisa Nelson  
Lise Dalcourt Lono  
Lisette Noodelman  
Litho-Pak Inc.  
Lois Cotton  
Lois Maeder Alves  
Lorna Gow  
Louise Devost  
Louise Joly  
Louise Landreville  
Louise Langlois  
Louise Robillard Piché  
Louise Sarrazin  
Louise Talbot  
Lower Canada College  
Lucia Mariani  
Lucid Motors  
Lyne Depatie  
Lyne Paquette  
Lynn Hendy  
Lynne Beauchemin  
Mackenzie Cave  
Madeleine Levesque  
Madeleine Martinse  
Magali Picard  
Maggie Costa  
Manuel & Margaret Senra  
Marc Chartrand  
Marc Landreville  
Marc Thibodeau  
Marc-André Littée  
Marcel Bourassa  
Marcel Brunet  
Marcel Morneault  
Marcel Nault  
Marco Della Rocca  
Margaret Bretin  
Margot Harbich  
Maria Carpini  
Maria Cucuzzella  
Maria Pace  
Maria Simonetta  
Maria Venturino  
Marianne Salama  
Marie Fedossow  
Marie-Andrée Crépeau  
Mariejosee Bigras  
Marielle Paquet  
Marilyn Dew  
Marilyn Parsons  
Mario Durante  
Marisa Mannarino  
Mark Weber  
Martina Angenent  
Martine Beauchamp  
Mary Ellen Bishyk  
Mary Price  
Mary Wells  
Marylena Franco  
Maryna Pletnova  
Maryse Bibeau  
Massimo Raso  
Matthew Lemire  
Maxime Boissonneault

# Our Donors

Maxime Brunet  
Megan Smith  
Melanie Lapointe  
Melanie Nudleman  
Melanie Richter  
Melissa Ferlaino  
Melissa Miguels  
Mercedes Alvarez  
Metro Richelieu Inc.  
Michael E Kieran  
Michael Eskenazi  
Michael Labelle  
Michael Wiener  
Michel Roy  
Michèle Véronneau  
Michelina Garone  
Michelle Mackinnon  
Mindy Weigensberg  
Miriam Khalil  
Mirna Brancacci  
Mitch Melnick  
Mladen Palaic  
Monbel Consultants Inc.  
Monica Alves  
Monica Flores  
Monica Karam  
Monique Beaupré-Lazure  
Monique Genest  
Monique Thonney  
Montreal Mini-Storage  
Morris & Rosalind  
Goodman Family  
Foundation  
Muriel Longlade  
Muriel Prince  
Murielle Gravel  
MYC Music for Young  
Children®  
Nadia Gerges  
Nadim Finan  
Nancy Kemp-Deakin  
Nancy Ritcey  
Nancy Shaw  
Nancy Stokes  
Nat Merenda  
Natasha L. Gould  
Nathalie Charland  
McMillan  
Nathalie Couturier  
Neal McComb  
Nevine Elchibini  
Nicholas Chamandy  
Nick Basciani  
Nicodemo Giurleo  
Nicola Di Nezza  
Nicole Leduc  
Nina Berkson  
Nivine Barsoum  
Norman Renglich  
Novyc International Inc.  
Olga Mora  
Olivia Ripa  
Olivia Torralbo  
Pamela Currie  
Paradisos Spa  
Pascal Paradis-Théberge  
Patrice Nzigamasabo  
Patricia Dawe  
Patricia Denis Boyer  
Patricia Heczko Heidenreich  
Patricia Kyriacos  
Paul & Claudette Graddon  
Paul Fischlin Services Inc  
Paul Konig  
Paul Murauskas  
Paul Stinis  
Paula Schwartz  
Paulina Sokalski

# Our Donors

Pauline Patulli	Rita Apa	Sandy Brassard
Penelope Dexter	Roanne D'Amours	Sandy Fitzpatrick
Pepiniere Pierrefonds Inc.	Robert Arasimowicz	Sandy Fostaty
Peter Leupold	Robert Asch	Sanjiv Nundy
Peter Moundroukas	Robert Cressaty	Savills Toronto
Peter Nicholson	Robert Gunther	Scott Pichette
Phebra Canada Inc.	Robert Kravitz	Sean Machmer
Philip Stote	Ron Korzinstone	Sébastien Souigny
PHT Transport	Rosa Ferlaino	Serena Fett
Pierre Shousha	Rosefellow Developments	Serge Boucher
Pierre Turcotte	Inc	Shahpour Reza Yahyapour
Pina Merenda	Roy Baird	Shannon Wight
Placements Montrusco	Russell Hiscock	Shari Crystal-Altman
Bolton Inc	Ruth Fischer	Sharron Lipson & Allan
Planchers Bellefeuille	Ruth Lana Major	Lerman
Produits Intégrés Avior	Sabrina Ste-Marie	Sheila Laursen
Integrated Products	Saint Luke's	Shelley Rabinowitz
Pure Treats Inc	Parish/Fabrique Paroisse	Sherri MacCallum
Rachel Meunier	de St-Luc	Shirley & Hymie Klein
Rania Al Amir	Salim Tayae	Shirley Cannell
RBC Phillips, Hager & North	Sam Mancino	Shirley Lamb
Investment Counsel Inc.	Samir Homsy	Shirley Magwood
Reagan Niedan	Samira Masri	Silvia Marguglio
Rebecca Lewis	Sandra Chirico	Simon Harte
Richard Gagnon	Sandra Harte	Siu Ghee Tam
Rick Headrick	Sandra Noseworthy	Sofia Papapanagiotou

# Our Donors

Sophie Orru  
Sophie Primeau  
St. Michael and All Angels  
Church  
Stacey Hoirch  
Stephan Henske  
Stephan Nappert  
Stephane Charland  
Stephanie Bentz  
Stephanie Gunther  
Stephanie Haugwitz  
Stephanie Steen  
Steve Beisswanger  
Steve Greenstein  
Steve Tarling  
Sue Maiorino  
Susan Davies  
Susan Hawke  
Susan Henderson  
Susan Issenman  
Susan Rhéaume  
Suzanne Mancuso  
Sylvia Kirstein  
Sylvie Laramee  
Sylvie Ouellet  
Talya Abran-Bromley  
Valerie MacPherson  
Vanessa Chalhoub  
Véronique Untereiner  
Viki Hountalas  
Viktoria Fisher  
Ville de Baie D'Urfé  
Ville de Beaconsfield  
Ville de Kirkland  
Ville de Pointe-Claire  
Virginia Myles  
Virinder Dhir  
Vivienne Morgan  
Walter Betz  
Wayne Harmidy  
Wendy Maclean  
Wener Family Office  
William Dawe  
Yannick Rancourt  
Yvan Roy  
Yvonne Kleiner  
Zeller Family Foundation  
Zena Riff  
Zengar Institue Inc  
Zoran Klobucar  
ZZA Inc.

# Gift In Kind

Andrea Courey  
B Factory  
Baton Rouge  
Beaconsfield Golf Club  
Bota Bota  
CCM  
CF Montreal  
Château Vaudreuil  
Christopher Kovalchuk  
Cirka Distilleries  
Club Automobile Triumph Canada Inc  
Club de Hockey Canadien Inc.  
David O'Hara  
Diane Roszkowski Communications  
Rosz Inc.  
Distillerie 3 Lacs  
DLC Greenteam (7574479 Canada  
Inc)  
Etiket  
F45 Training Fairview West Island  
Foodtastic  
Four Seasons Hôtel Montréal  
Frames To Go  
Gym Fit Forme  
Hed Rossi Enterprises  
Henryka Ltd/Ltée  
Hotel Birks Montreal  
J. Sonic Services Inc.  
Jay Peak Resort

John Murphy  
Kim Blank LuLu Lanyards  
Kurios Photography  
La Trattoria  
Lincoln Apartment Bakery  
One Happy Potter  
Orchestre FILMHarmonique  
OSM Orchestre Symphonique de  
Montréal MSO  
Pharmaprix-Kirkland  
Poutineville  
Residence Inn Montreal Airport Marriott  
Restaurant La Serenata  
Restaurant Le Bienheureux  
Robert Lamarre  
Simply the Best Talent & Entertainment  
Spa Essentiel by Esthétique Spa Munari  
Summerlea Golf & Country Club  
Sylvie Morel  
Tazza di Mattina  
Thomas Divisek Montreal Mobile Wash  
TSN  
Urban Legends Boxing  
Vivier  
Vladimir Stoev Paradisos Spa  
Windmill Heights Golf Club  
Zen Chez Vous

# Service Partners

A heartfelt THANK YOU goes out to our fantastic partners who generously provide products and services that uphold our Centre. We could not operate without the generosity of partners who offer products and services at no cost to the Centre.



Abbott Nutrition has generously provided Ensure and Glucerna products to participants living with cancer for over ten years. Ensure® offers balanced nutrition to help adults meet their specific nutritional needs.



AFFARI designs spaces that inspire emotion, creativity, and innovation—collaborating with you every step of the way for a seamless experience.



Since 2016, Catsys has been providing the WICWC with quick and professional IT services.



Deakin Realty has offered real estate guidance and support for several years. Whether buying your first home, upgrading, or downsizing, their team is with you every step of the way.



Deritec Plomberie et Chauffage/Plomberie Richard Leduc has been supporting the WICWC's plumbing needs since 2023.

# Service Partners



From maintenance to construction, and all the way through to snow removal, DLC is equipped to meet your seasonal needs, whatever they may be.



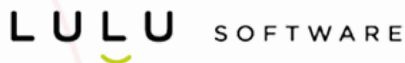
Genatec has provided exceptional software for our Living Well with Cancer Network, offering tailored business management solutions designed to meet each organization's unique needs.



Google hosts the organization's email.



For over five years, Greenlite has generously covered our postage costs. As a leader in energy-efficient lighting, they promote a community committed to sustainability.



Lulu Software has been providing the WICWC with a PDF software program since 2016.



Luminet Solutions Inc. has provided telecommunications products and services across Montreal, Quebec, and Canada for over 15 years.



As a nonprofit, we receive free software from Microsoft.

# Service Partners



Access a wide range of office products at great prices with reliable next-day delivery, including supplies, stationery, printing materials, technology, equipment, and more.

**Sean Jackson  
Installations Inc.**

Since 2024, Sean Jackson Installations Inc. has been providing repair and maintenance services for our fireplace, bringing immense comfort to our many participants who visit our library.



Strathmore brings their expertise to the WICWC by providing landscaping management since 2016.

*Tim Hortons*

Tim Hortons West Island provides us with ground coffee on an ongoing basis as well as treats or lunches for small groups on occasion.